



CLEAN GREEN ENERGY MISSION

PROJECT REPORT

GREEN WIND POWER GENERATION

Project Name	BELLARY
Project Reference	P-001
Site	Ballari, Bellary taluk, Ballari, Karnataka, 583101, India
Client Name	NxxC
Client Reference	C-001
Generated On	29-Apr-2026 14:16
Prepared By	ASHWINKUMAR/ARAVINTHRAAJAN ENERGY SYSTEM





TABLE OF CONTENTS

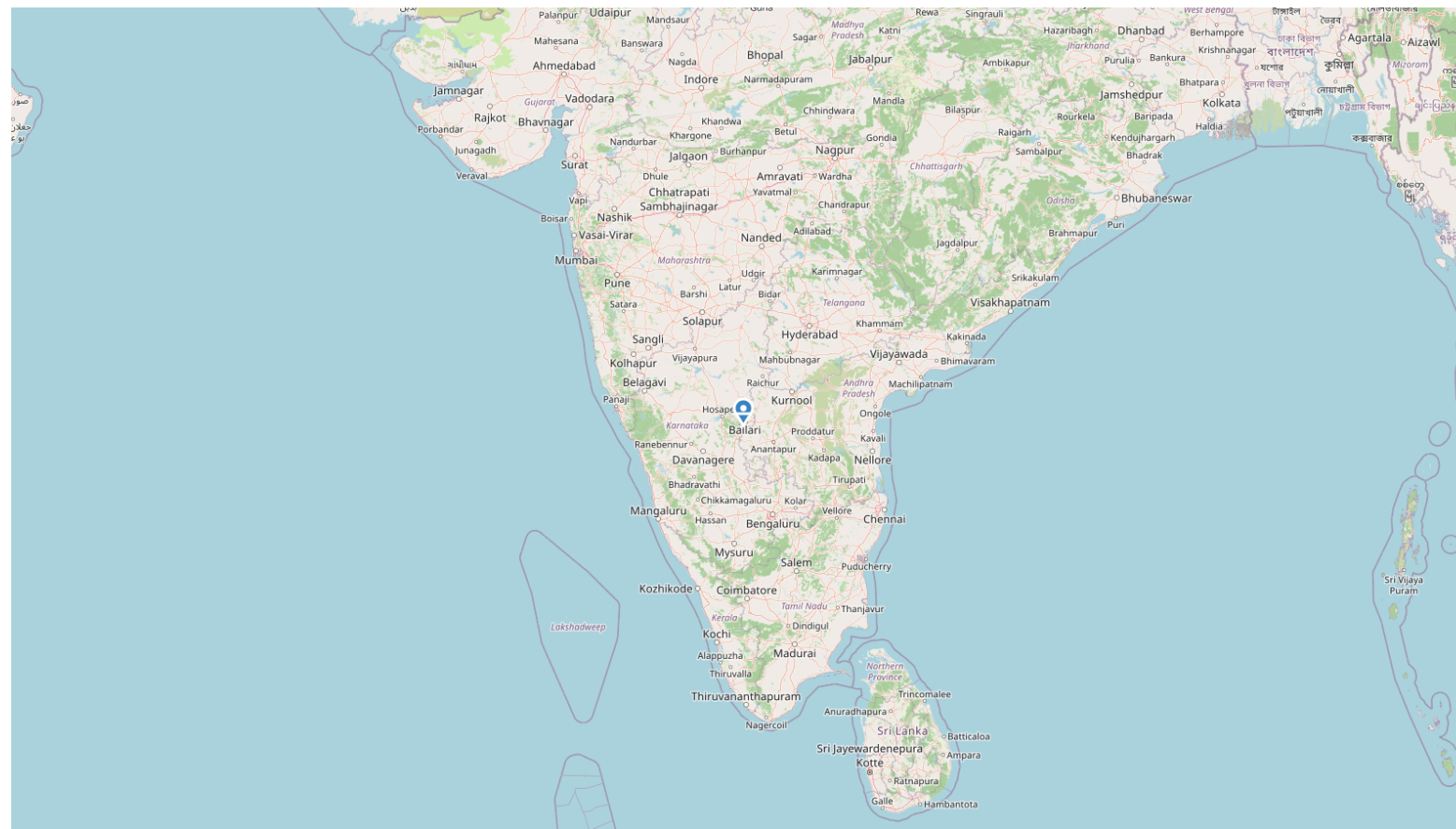
SL	1. Site Location	3
KI	2. Key Inputs	4
PD	3. Plant Description	5
LE	4. Land Estimate	6
CX	5. Capex Estimate	7
CF	6. Carbon Footprint	8
KR	7. Key Results	9
GP	8. ESTIMATED GENERATION AND POWER BALANCE	10
FA	9. FIXED ASSETS, WORKING CAPITAL AND DEBT	11
LC	10. ESTIMATION OF LEVELISED COST OF GENERATION	12
RV	11. ESTIMATION OF REVENUE GENERATION	13
PS	12. PROJECTED PROFITABILITY STATEMENT	14
CF	13. PROJECTED CASH FLOW STATEMENT	15
BS	14. PROJECTED BALANCE SHEET	16
DS	15. DEBT SERVICE COVERAGE RATIO	17
IR	16. INTERNAL RATE OF RETURN (IRR) AND NET PRESENT VALUE (NPV)	18
VA	17. Visual Appendix (Charts)	19

Clean Green Energy Mission - Report
GREEN WIND POWER GENERATION

SITE LOCATION

Location	Ballari, Bellary taluk, Ballari, Karnataka, 583101, India
Latitude	15.190275
Longitude	76.884813

Site Map Snapshot





Clean Green Energy Mission - Report
GREEN WIND POWER GENERATION

KI Key Inputs

Details	Unit	Data
PROJECT DATA		
Project Name		BELLARY
Project Reference		P-001
Client Name		NxxC
Client Reference		C-001
Revision No.		A
Revision Date		12/04/2026
PROJECT CURRENCY		
Project Currency		INR
SITE LOCATION		
Location		Ballari, Bellary taluk, Ballari, Karnataka, 583101, India
Latitude		15.190275
Longitude		76.884813
YEAR FOR SOLAR AND WIND DATA		
Year for Solar and Wind Data		2024
RE POWER GENERATION		
Wind Power Generation	MW	813
Purpose of BESS		NO BESS PROVIDED
WIND ENERGY GENERATOR PLANT		
WEG Make & Model		Suzlon S144/3000
WEG Rated Power		3000
Rotor Diameter	Meter	144
Hub Height	Meter	160
WEG System Loss	%	0
Average Power Coefficient (Cp)	(0 means OEM power curve is applied)	0
Rated Speed	m/s	9.2
Cut-in-Speed	m/s	3
Cut-out-Speed	m/s	18
Cost of Wind Energy Generator	INR/KW	60000



Details	Unit	Data
BATTERY ENERGY STORAGE SYSTEM (BESS PLANT)		
BESS Plant Provided		No
Type of Battery		LFP Lithium-Ion
BESS Plant Load Percentage	%	50
Depth of Discharge*		0.90
Autonomy	Hours	4
BESS Round Trip Efficiency	%	90
BESS Safety & Reserve Margin	%	10
End-of-life SOH threshold	%	80
Battery Cycle Degradation	%	0.003
Cost of Battery System	INR/KWH	9000
Cell Replacement (% of CAPEX)	% of CAPEX COD	30
CAPEX OF THE PLANT		
CAPEX of Wind Turbine	INR/KW	100000
CAPEX of BESS Plant	INR/KWH	0
Land Price	INR/ACRES	125000
Country Factor for Labour Work		1
PLANT OPERATING DETAILS		
Life of the Plant	YEARS	20
Construction Period	MONTHS	24
O&M Expenses - Wind Turbine	INR/kW	1200
O&M Expenses - BESS	INR/kWh	150
Auxiliary Power - Wind Turbine	%	0.5
Auxiliary Power - BESS	%	2
Working Capital for Spares	% of CAPEX	1
Working Capital for O&M	Months	1
Working Capital for Receivables	Months	1
Cost of Treated Water	INR/CUM	50
PROJECT FINANCIALS		
Equity	%	30
Return on Equity	%	0
Loan Repayment Period	YEARS	10
Loan Moratorium Period	YEARS	2



Details	Unit	Data
Interest Rate on Term Loan	%	7
Interest Rate on Working Capital	%	7
Working Capital Margine Money	%	25
TAX Depreciation Rate	%	10
Discount Rate	%	8
Income Tax	%	22
Tax Holiday	YEARS	2
Salvage Value	%	10
Exchange Rate Variation	%	2
SUBSIDIES AND INCENTIVES		
Capital Subsidy (% of CAPEX)	%	0
Subsidy Receipt Year (1=Year1)	Year	1
RE Generation-Based Incentive	INR/KWH	0
GBI Eligibility Period	Years from COD	5
TARGETTED SALE PRICE		
GREEN RE POWER SALE PRICE		
Green RE Power Sale Price	INR/KWH	0
PLANT DEGRADATION		
Wind Turbine Annual Degradation	%	0.70
BESS Annual Degradation	%	1
Curtaiment / Losses	%	0
RE Transmission Losses	%	0
GRID Transmission Losses	%	2
PRICE ESCALATION		
Green RE Power Sale Price Escalation	%	2
Whole Sale Price Index (WPI)	%	4
Consumer Price Index (CPI)	%	6
Annual Battery Price Escalation	%	0
CARBON FOOTPRINT - GHG EMISSION REDUCTION		
Baseline Emissions Factor for Grid Power	kg CO ₂ e/kWh	0.9
Life Cycle CO ₂ e Intensity-Solar	kg CO ₂ e/kWh	
Life Cycle CO ₂ e Intensity-Wind	kg CO ₂ e/kWh	0.015
Life Cycle CO ₂ e Intensity-DM/RO Water	kg CO ₂ e/cum	0.5



Details	Unit	Data
Carbon Credit Market/Standard		ICM (India)
Market Price for Carbon Credit for avoidance Project	USD/tons of CO ₂ e	10
Annual Carbon Credit Price Escalation	%	3



Clean Green Energy Mission - Report
GREEN WIND POWER GENERATION

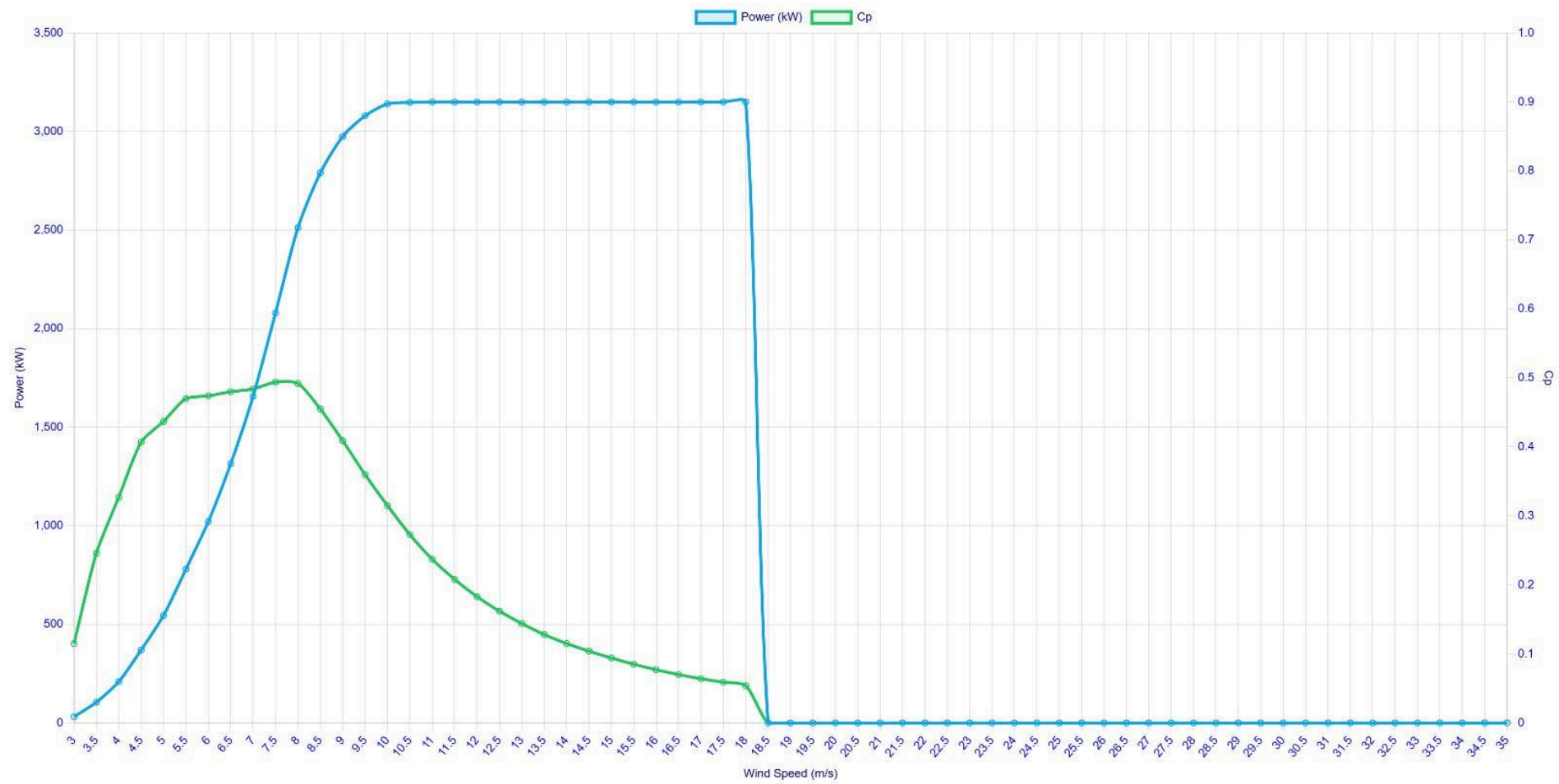
OEM APPENDIX

OEM POWER CURVE GRAPH

OEM POWER CURVE

WEG Model	Suzlon S144/3000	Rotor Diameter (m)	144.00	Hub Height (m)	160.0
Rated Power (kW)	3000	Cut-in Speed (m/s)	3.00	Cut-out Speed (m/s)	18.00

Visual table omitted in PDF appendix due to width (66 columns).





Clean Green Energy Mission - Report
GREEN WIND POWER GENERATION

PD Plant Description

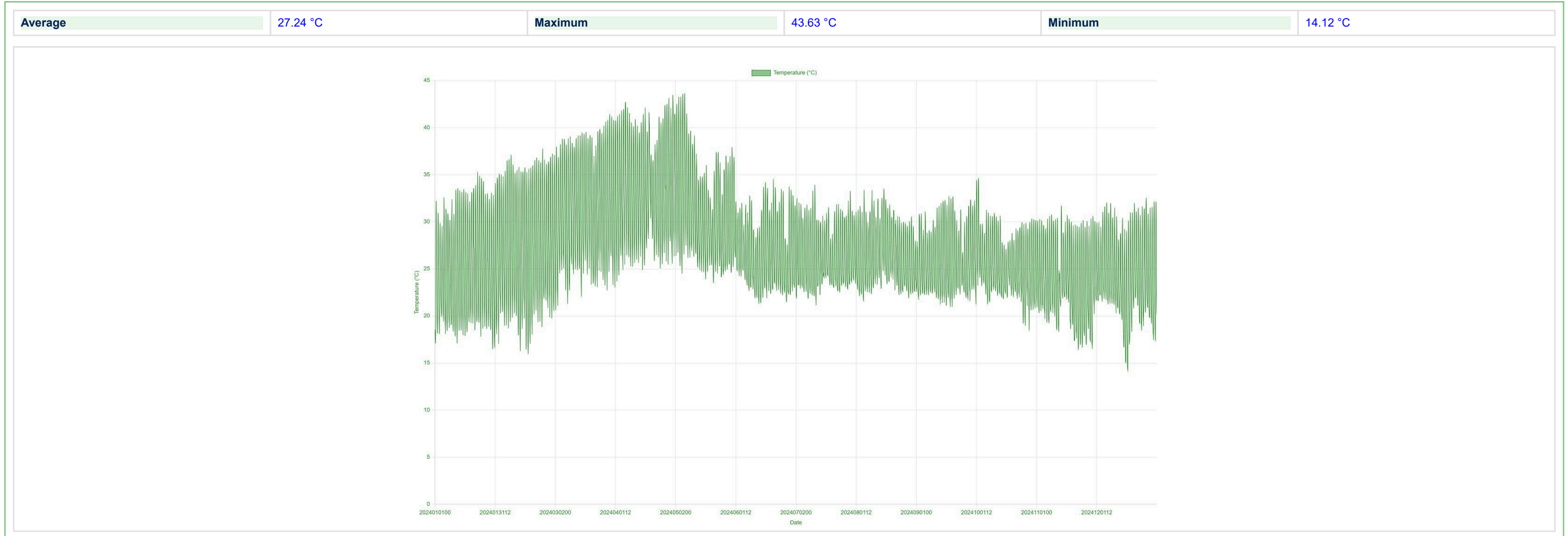
Details	Unit	Data
WIND ENERGY GENERATOR PLANT		
Site Terrain		Rough/Urban
Site IEC Wind Classification	Medium Wind Site	II
Site IEC Turbulance Classification	Low turbulance	C
Capacity Utilization Factor	%	62.96
Wind Turbine Plant Capacity	KW	813000
No of Wind Turbine Generators	Nos	271
Selected Plant Capacity	KW	813000
Annual Gross Wind Electricity generation	KWH / MKWH	4495908087 / 4495.91
Annual Auxiliary Power Consumption	KWHH	22479540 / 22.48
Annual Net Wind Electricity generation	KWH / MKWH	4473428547 / 4473.43
BATTERY ENERGY STORAGE SYSTEM (BESS PLANT)		
Annual Battery Cycles	Nos of charging cycles	0
Battery Replacement Life	Years	20
BESS Load	KW	0
BESS Plant Capacity	KWH	0
Annual Net Power Consumed in BESS	KWH / MKWH	0 / 0.00
Annual BESS Auxiliary Power & Other Losses	KWH / MKWH	0 / 0.00



Clean Green Energy Mission - Report
GREEN WIND POWER GENERATION

VISUAL APPENDIX

AMBIENT TEMPERATURE GRAPH

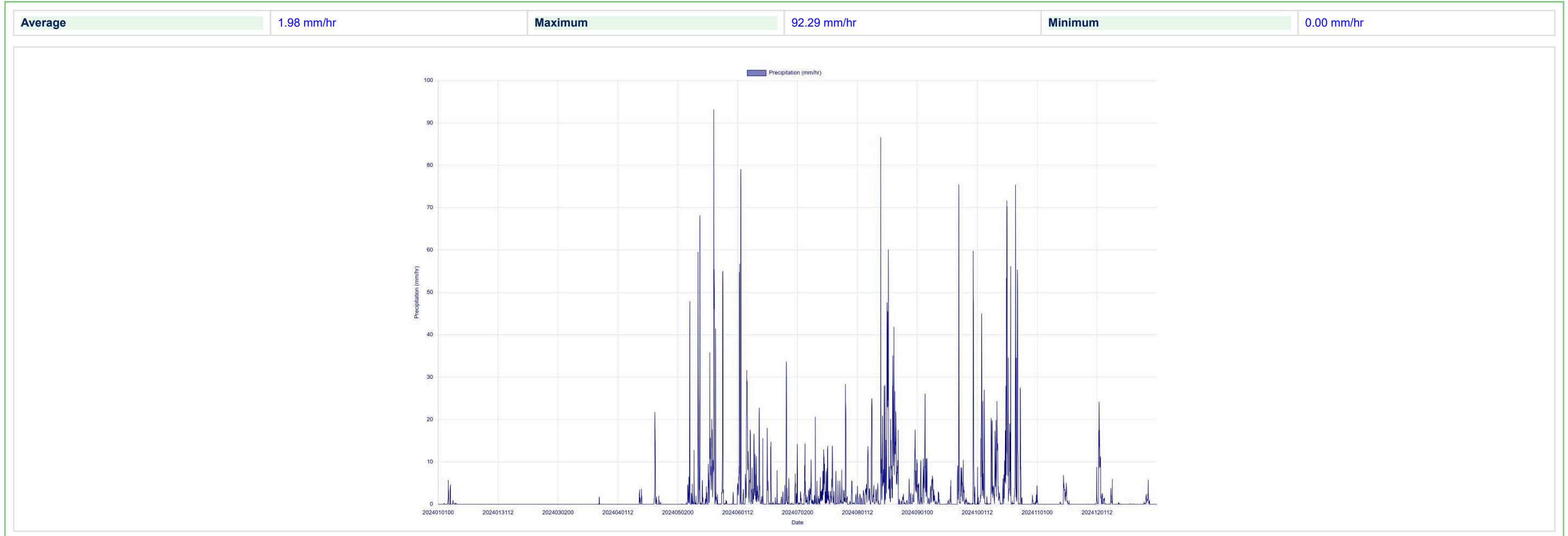




Clean Green Energy Mission - Report
GREEN WIND POWER GENERATION

VISUAL APPENDIX

PRECIPITATION GRAPH

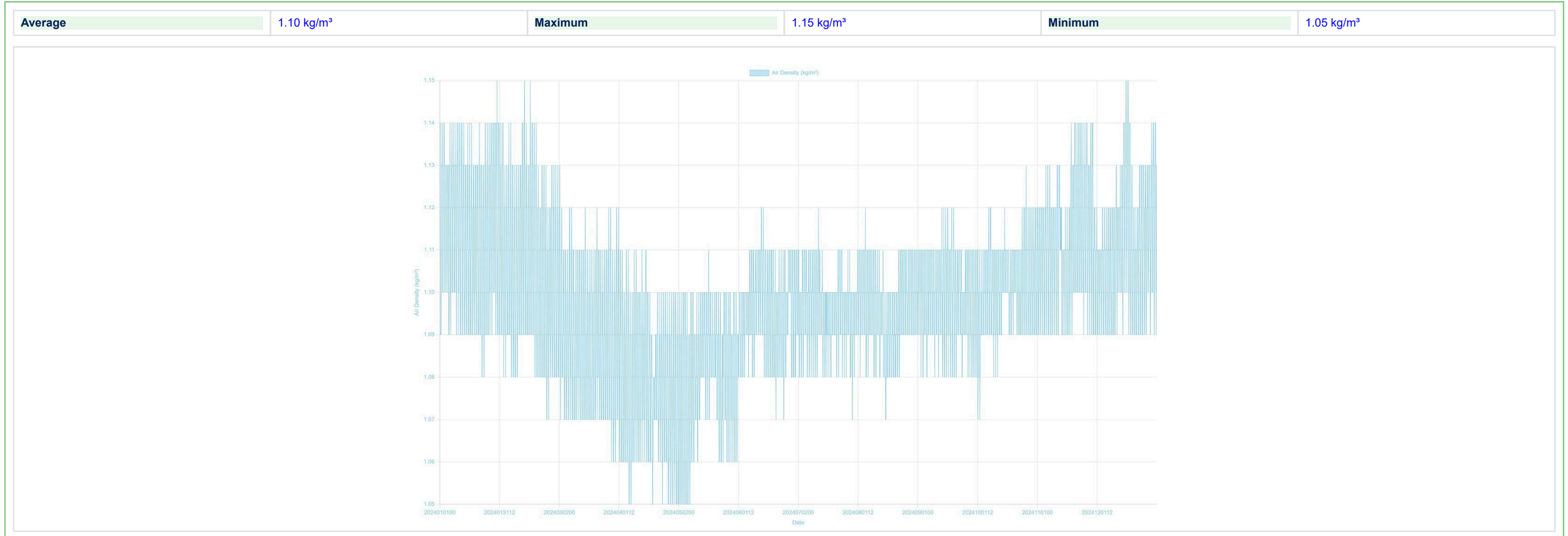




Clean Green Energy Mission - Report
GREEN WIND POWER GENERATION

VISUAL APPENDIX

AIR DENSITY GRAPH

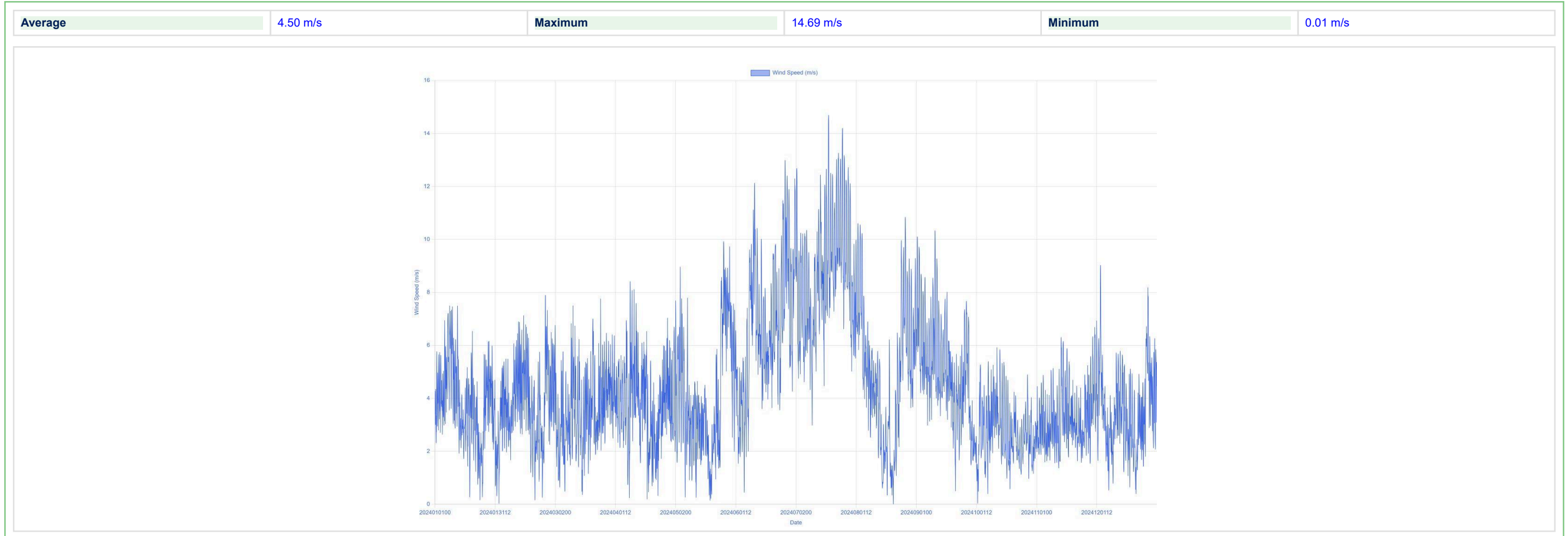




Clean Green Energy Mission - Report
GREEN WIND POWER GENERATION

VISUAL APPENDIX

WIND SPEED 10M GRAPH

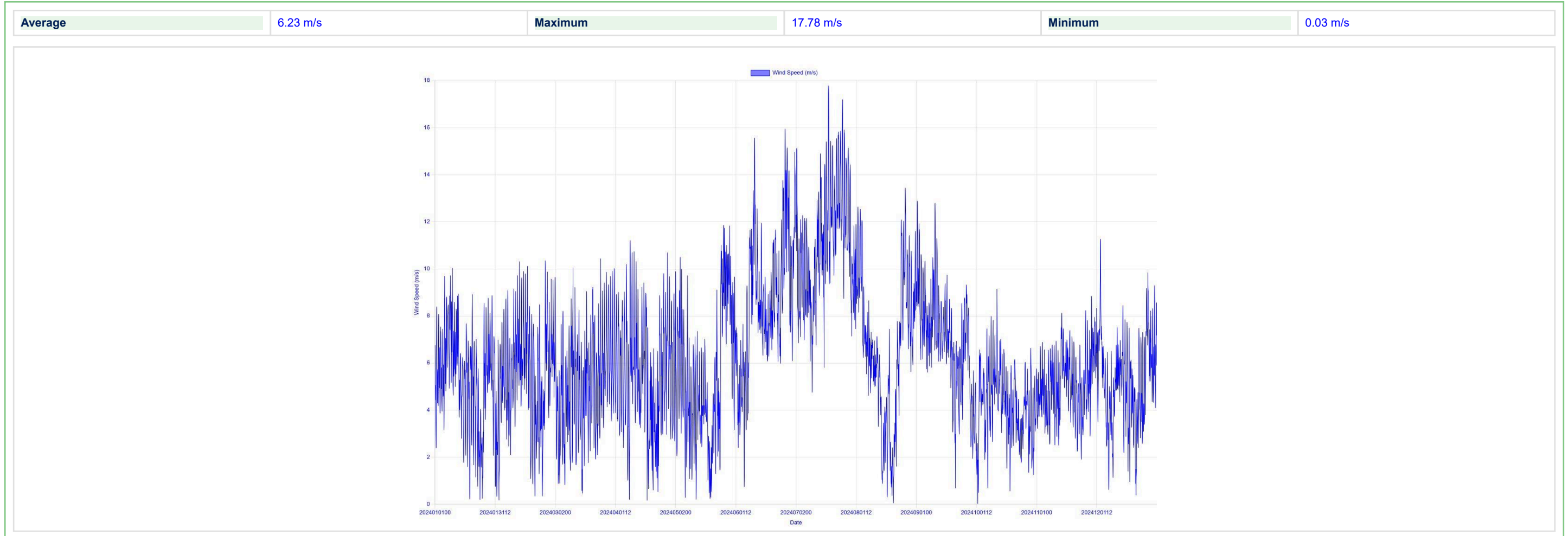




Clean Green Energy Mission - Report
GREEN WIND POWER GENERATION

VISUAL APPENDIX

WIND SPEED 50M GRAPH

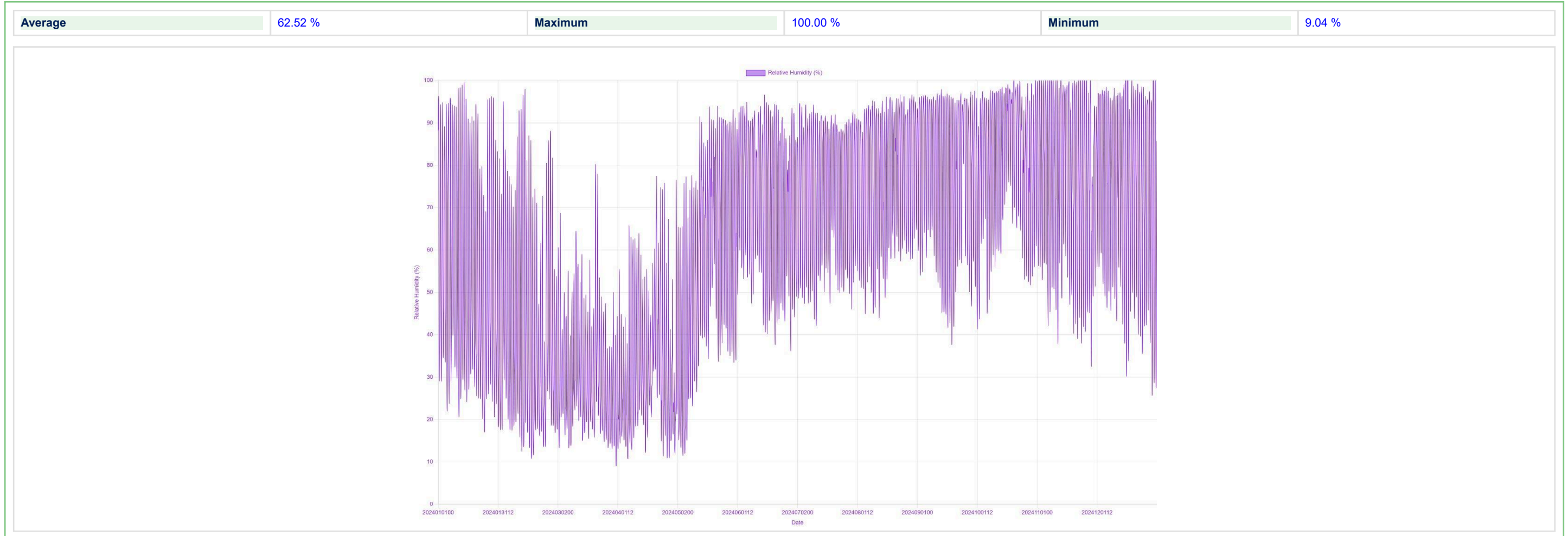




Clean Green Energy Mission - Report
GREEN WIND POWER GENERATION

VISUAL APPENDIX

RELATIVE HUMIDITY GRAPH

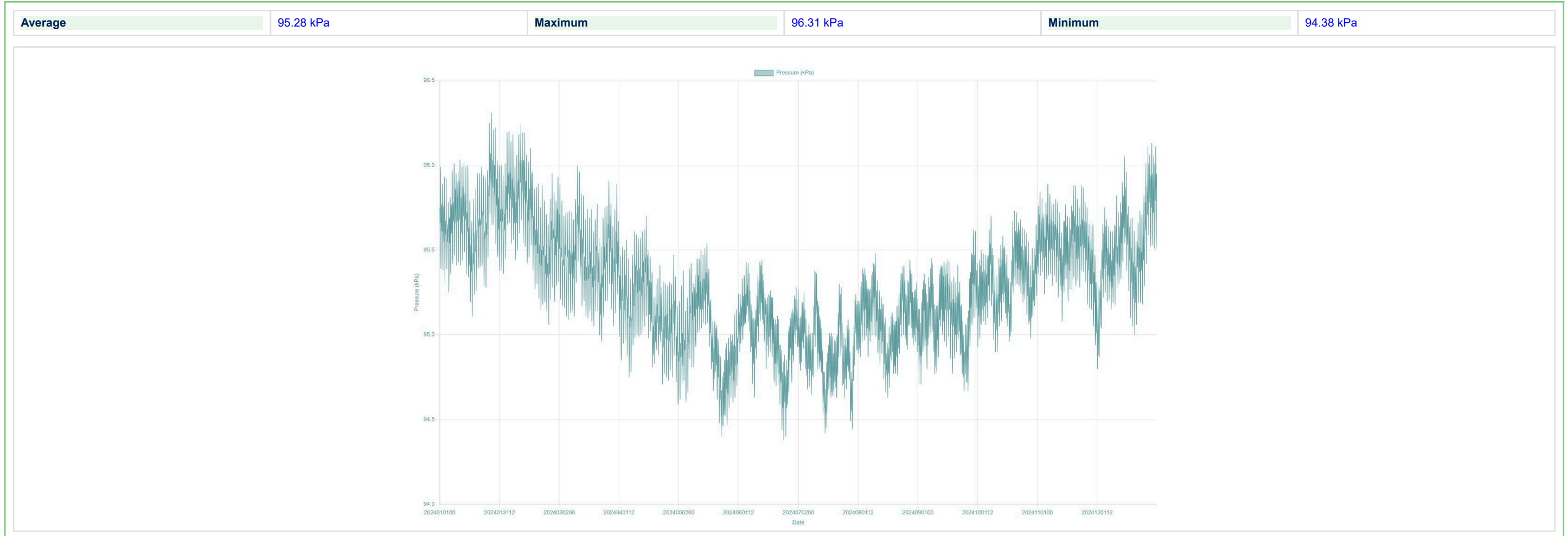




Clean Green Energy Mission - Report
GREEN WIND POWER GENERATION

VISUAL APPENDIX

AMBIENT PRESSURE GRAPH

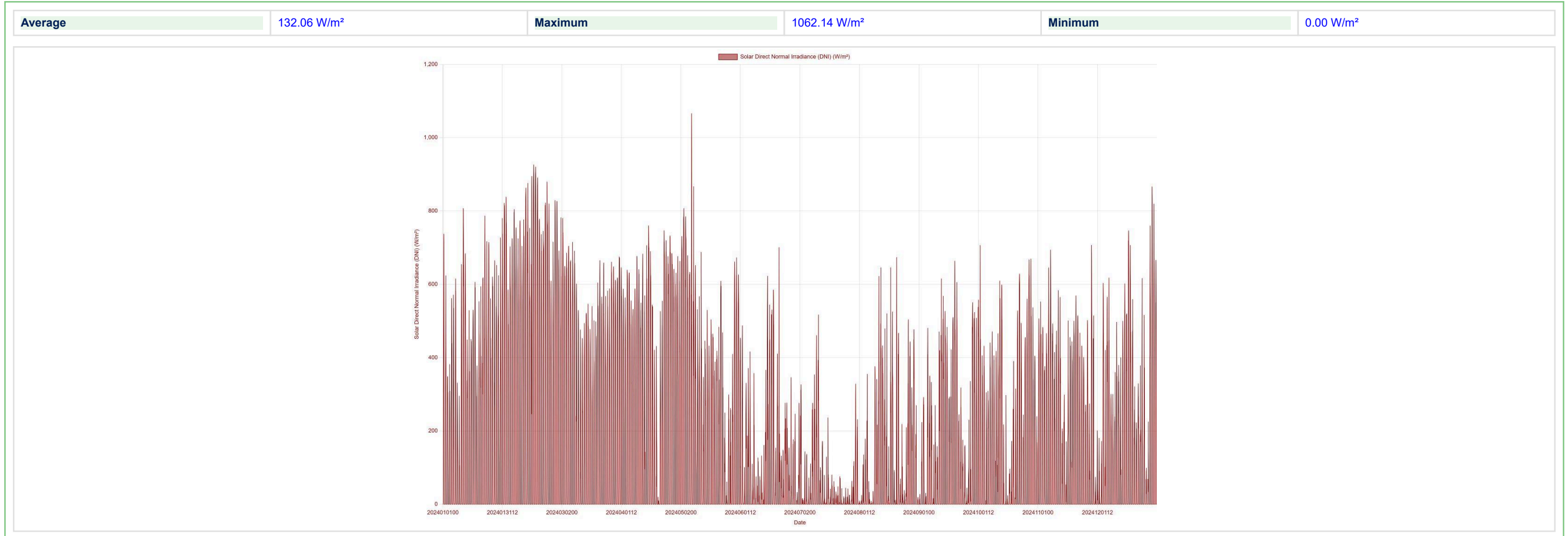




Clean Green Energy Mission - Report
GREEN WIND POWER GENERATION

VISUAL APPENDIX

SOLAR DIRECT NORMAL IRRADIANCE (DNI) GRAPH

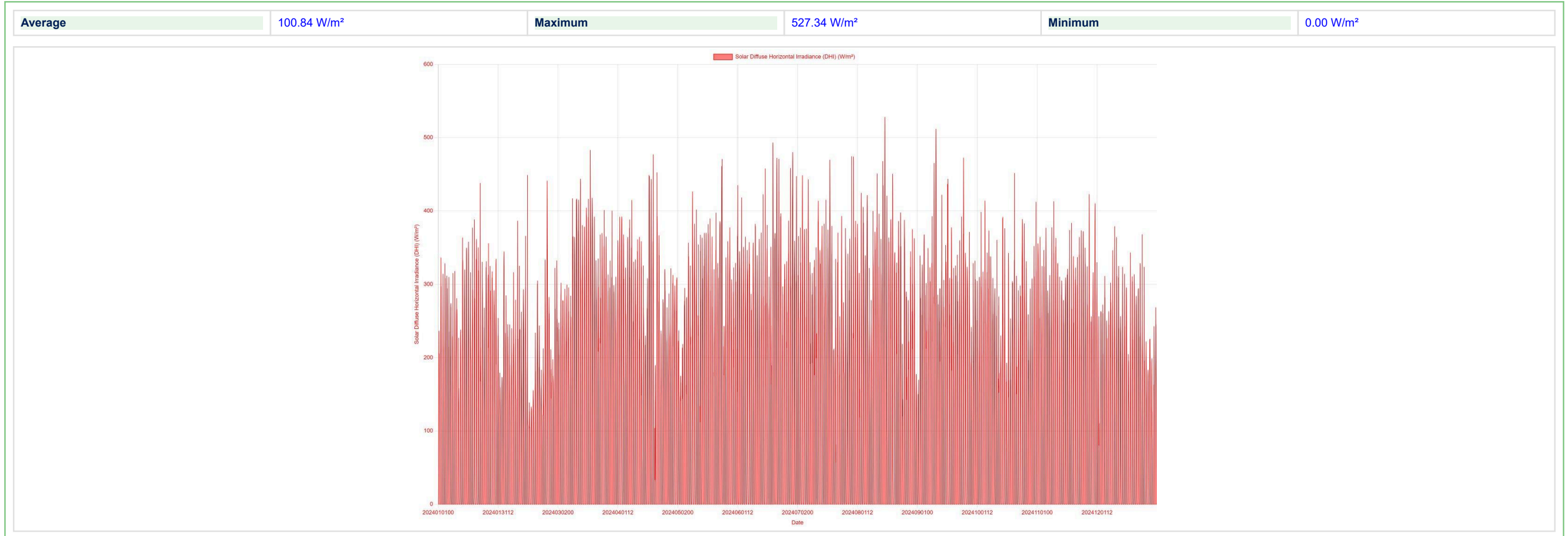




Clean Green Energy Mission - Report
GREEN WIND POWER GENERATION

VISUAL APPENDIX

SOLAR DIFFUSE HORIZONTAL IRRADIANCE (DHI) GRAPH



Clean Green Energy Mission - Report
GREEN WIND POWER GENERATION

VISUAL APPENDIX

WIND HOURLY DATA ANALYSIS

Time Zone :		India Standard Time					
BESS Purpose :		NO BESS PROVIDED					
SITE CLASSIFICATION AS PER IEC 61400-1							
Average Alpha :	0.218	Site Terrain :	Rough/Urban	Average Coefficient of Performance:	0.307	Turbulence Intensity at 15m/s wind speed:	0.039
Refernce extreme wind speed at hub height m/s:	41.884	50years steady extreme wind speed at hub height m/s:	16.754	1year steady extreme wind speed at hub height m/s:	13.403	50years largest gust magnitude wind speed at hub height m/s:	58.638
IEC Wind Class:	II	IEC Wind Classification:	Medium Wind Site	IEC Turbulance Class:	C	IEC Turbulance Classification:	Low turbulence
WIND SPEED AT HUB HEIGHT GRAPH							
Maximum Wind Speed at Hub Height m/s :	21.29	Average Wind Speed at Hub Height m/s :	8.38	Minimum Wind Speed at Hub Height m/s :	0.03		

Wind Speed at Hub Height (m/s)

Wind Speed at Hub Height (m/s)

Date



Clean Green Energy Mission - Report
GREEN WIND POWER GENERATION

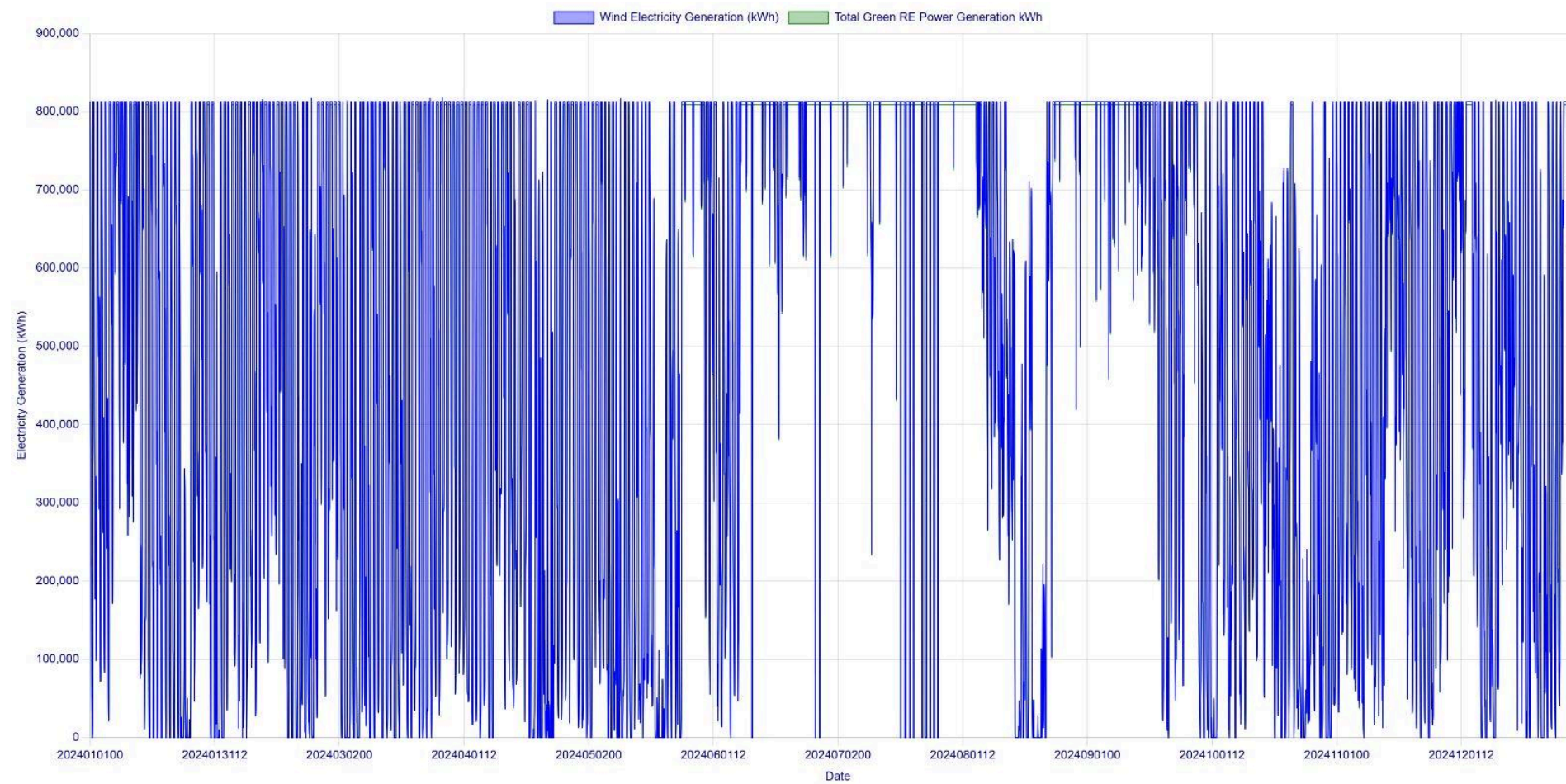
VISUAL APPENDIX

GENERATION SUMMARY

Gross Wind Energy Generation kWh:	4495908087.44	Net Green Electricity Generation kWh:	4473428546.95	Direct Power Export kWh:	4473428546.95	Battery Discharging Power kWh:	0.00	BESS Capacity Utilization Factor %:	0.00	Annual Net Green RE Power for Export kWh:	4385714264.14
Wind Energy Generator Capacity Utilization Factor %:	62.96	BESS Power kWh:	0.00	Battery Charging Power kWh:	0.00	Balance BESS Power kWh:	0.00	Wind Energy Capacity Utilization Factor without BESS %:	62.64	Wind Energy Net Capacity Utilization Factor with BESS %:	61.41

GREEN RE POWER GENERATION GRAPH

Maximum Net Green RE Power Generation kWh :	808935.00	Average Net Green RE Power Generation kWh :	509270.10	Minimum Net Green RE Power Generation kWh :	0.00
---	-----------	---	-----------	---	------





Clean Green Energy Mission - Report
GREEN WIND POWER GENERATION

VISUAL APPENDIX

BESS POWER GRAPH

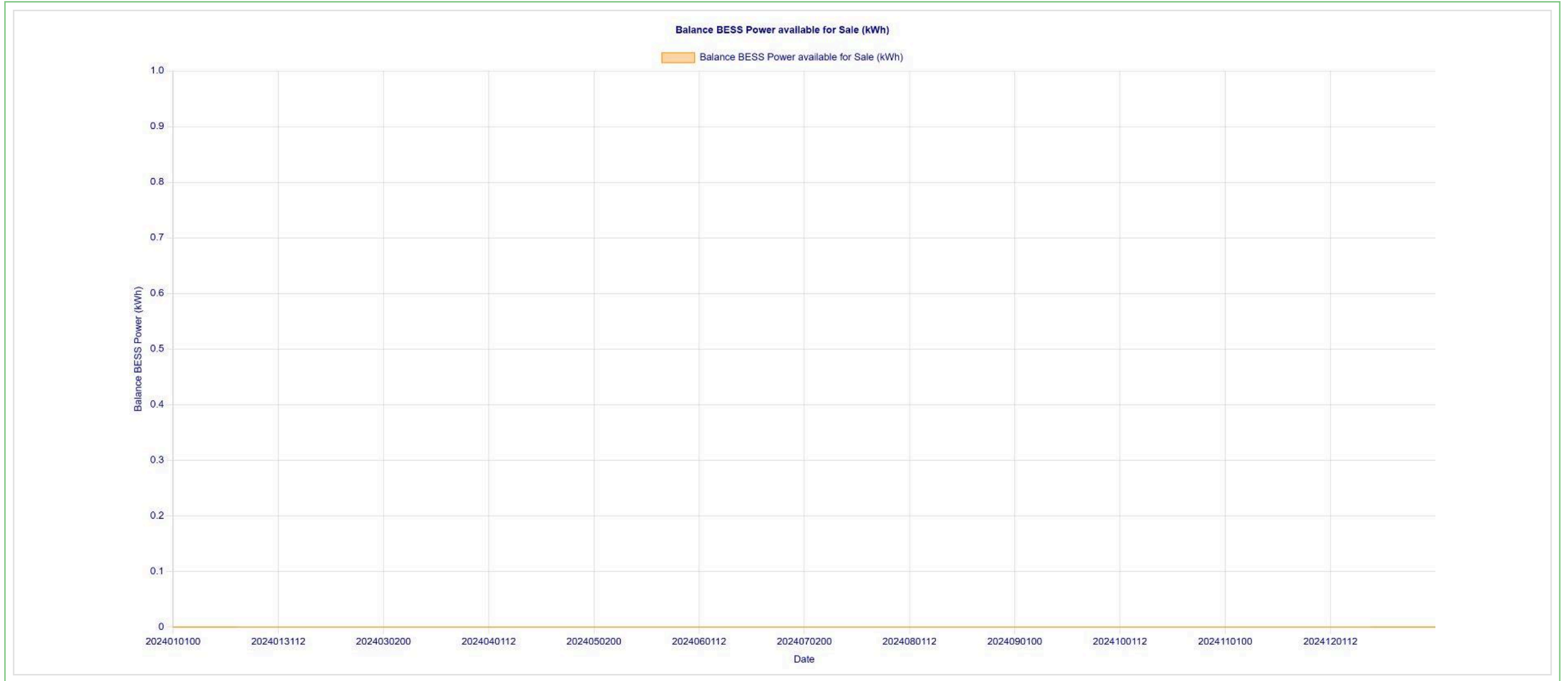




Clean Green Energy Mission - Report
GREEN WIND POWER GENERATION

VISUAL APPENDIX

BALANCE BESS POWER AVAILABLE FOR SALE GRAPH



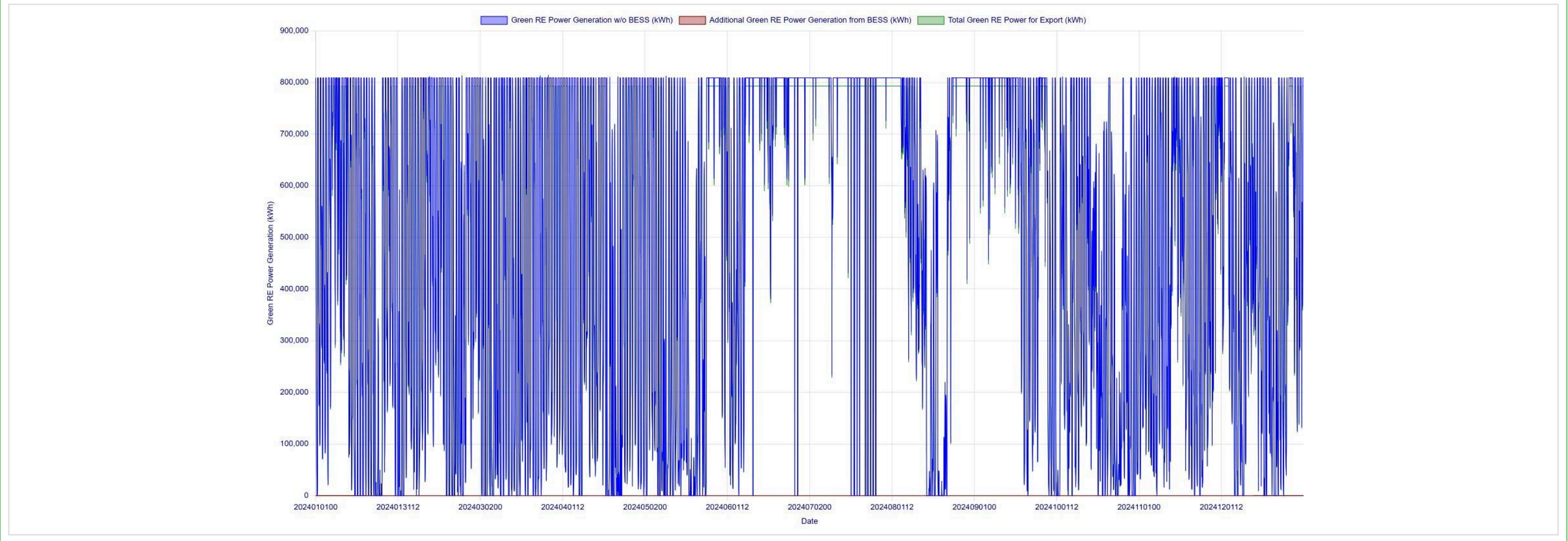


Clean Green Energy Mission - Report
GREEN WIND POWER GENERATION

VISUAL APPENDIX

GREEN RE POWER FOR EXPORT GRAPH

Maximum Green RE Power Generation w/o BESS kWh :	808935.00	Average Green RE Power Generation w/o BESS kWh :	509270.10	Minimum Green RE Power Generation w/o BESS kWh :	0.00
Maximum Green RE Power Generation from BESS kWh :	0.00	Average Green RE Power Generation from BESS kWh :	0.00	Minimum Green RE Power Generation from BESS kWh :	0.00
Maximum Total Green RE Power for Export kWh :	793073.53	Average Total Green RE Power for Export kWh :	499284.41	Minimum Total Green RE Power for Export kWh :	0.00





Clean Green Energy Mission - Report
GREEN WIND POWER GENERATION

LE Land Estimate		
Details	Unit	Data
Land Requirement for Wind Power Generation		
WEG LAYOUT / SPACING AREA	SQ.M	224778240
ELECTRICAL SUBSTATION & SWITCHYARD	SQ.M	81300
SCADA / CONTROL BUILDING	SQ.M	40650
INTERNAL ACCESS ROADS	SQ.M	365850
CRANE PADS & LAYDOWN AREA	SQ.M	162600
CONSTRUCTION AREA	SQ.M	121950
TOTAL AREA FOR WIND POWER GENERATION	SQ.M / HECTARES / ACRES	225550590 / 22555.06 / 55734.72
Land Requirement for BESS Plant		
BATTERY BLOCK AREA	SQ.M	0
INVERTER SKIDS & TRANSFORMERS AREA	SQ.M	0
POWER CONVERSION SYSTEM AREA	SQ.M	0
AREA FOR ROADS AND OTHER INFRASTRUCTURE	SQ.M	0
TOTAL AREA FOR BESS PLANT	SQ.M / HECTARES / ACRES	0 / 0 / 0
Total Land Requirement for the Project		
TOTAL LAND REQUIREMENT FOR THE PROJECT	SQ.M / HECTARES / ACRES	225550590 / 22555.06 / 55734.72
TOTAL PROJECT LAND COST		
WIND POWER PLANT LAND COST	Million INR	6966.8394
BESS PLANT LAND COST	Million INR	0
TOTAL PROJECT LAND COST	Million INR	6966.8394



Clean Green Energy Mission - Report
GREEN WIND POWER GENERATION

CX Capex Estimate

Details	Unit	Data
WIND ENERGY GENERATOR PLANT CAPEX ESTIMATION BREAK-UP		
WEG Rated Power		3000
No of Wind Turbine Generators	Nos	271
Cost of Wind Energy Generator per kW	INR/kW	60000
Cost of Wind Energy Generator	Million INR	48780
Cost of WEG Electrical System	Million INR	6504
Cost of Civil & Site Works	Million INR	8130
Cost of Grid Interconnection & Substation	Million INR	4878
Cost of Construction & Installation	Million INR	4065
Cost of Project Management	Million INR	1626
Cost of Engineering, Permitting & Studies	Million INR	1626
Cost of EPC Management, HSE & QA/QC	Million INR	813
Cost of Testing, Commissioning & COD activities	Million INR	813
Cost of Insurance, Contingency & Spares	Million INR	4065
WEG PLANT CAPEX	Million INR	81300
WEG PLANT CAPEX PER KW	INR/kW	100000
WEG PLANT CAPEX PER KW IN USD	USD/kW	1060
BESS PLANT CAPEX ESTIMATION BREAK-UP		
BESS Load	KW	0
BESS Plant Capacity	KWH	0
Cost of Cost of Battery System per kWH	INR/kWH	9000
Cost of Battery system (containers + cells + racks)	Million INR	0
Cost of PCS/Electrical System	Million INR	0
Cost of Balance of Plant	Million INR	0
Cost of Civil & Site Works	Million INR	0
Cost of Construction & Installation	Million INR	0
Cost of Project Management	Million INR	0
Cost of Engineering, Permitting & Studies	Million INR	0
Cost of EPC Management, HSE & QA/QC	Million INR	0
Cost of Testing, Commissioning & COD activities	Million INR	0

Details	Unit	Data
Cost of Insurance, Contingency & Spares	Million INR	0
BESS PLANT CAPEX	Million INR	0
BESS PLANT CAPEX PER KWH	INR/kWH	0
BESS PLANT CAPEX PER KW IN USD	USD/kWH	0
TOTAL INVESTMENT (CAPEX)		
Wind Energy Generator Plant	Million INR / %	81300.00 / 92.107
BESS PLANT	Million INR / %	0.00 / 0
PV OF Battery Replacement Cost	Million INR / %	0.00 / 0
PROJECT LAND COST	Million INR / %	6966.84 / 7.893
Total Investment (CAPEX)	Million INR / %	88266.84 / 100
Total Investment (CAPEX) IN USD	Million USD	935.63
PROJECT FINANCIALS		
Gross Project Cost excluding IDC	Million INR	88266.84
Capital Subsidy	Million INR	0.00
Net Project Cost excluding IDC	Million INR	88266.84
Equity	%	30
Debt	%	70
Equity Capital Cost	Million INR	28473.17
Borrowed Capital Cost	Million INR	66437.41
Project Schedule for the Plant	Months	24
Interest During Construction(IDC)	Million INR	6643.74
Total Borrowing	Million INR	73081.15
Net Project Cost including IDC	Million INR	94910.58
Total Project Cost	Million INR	94910.58
Installed Cost of Green Power Generation Plant	INR/kW	116741
Installed Cost of Green Power Generation Plant	USD/kW	1237.45

Clean Green Energy Mission - Report
GREEN WIND POWER GENERATION

CF Carbon Footprint

Details	Unit	Data
CARBON FOOTPRINT - GHG EMISSION REDUCTION		
Baseline Emissions Factor for Grid Power	kg CO ₂ e/kWh	0.9
Project Lifecycle Intensity Emissions	kg CO ₂ e/kg kWh	0.015
Net Emission Reduction per kWh of RE Power	kg CO ₂ e/kg kWh	0.885
Annual Total Emission Reduction from the Project	kg CO ₂ e/year	3978146957
Annual Total Emission Reduction from the Project	tons of CO ₂ e/year	3978146.96
Carbon Credit Market/Standard		ICM (India)
Market Price for Carbon Credit for avoidance	USD/tons of CO ₂ e	10
Annual additional revenue from Carbon Credit	INR	3752968827.35
GREENHOUSE GAS EQUIVALENCIES		
Petrol consumption for passenger cars for one year	No of Petrol Cars	926908
Electricity for passenger electric cars for one year	No of Electric Cars	3512704
Equivalent to Coal burning	kgs	2004986066
Equivalent to Oil consumption	barrels	9149738
Equivalent to Petrol consumption	litres	1702646898
Equivalent to Diesel consumption	litres	1479870668
Equivalent to carbon sequestered by tree seedlings grown for 10 years	No of trees	65639425



Clean Green Energy Mission - Report
GREEN WIND POWER GENERATION

KR Key Results

Details	Unit	Data
SITE AMBIENT,SOLAR AND WIND DATA		
PROJECT NAME		BELLARY
SITE LOCATION		Ballari, Bellary taluk, Ballari, Karnataka, 583101, India
SITE LATITUDE	(+ = North & - = South hemisphere)	15.190275
SITE LONGITUDE	(+ = East & - = West of Greenwich meridian)	76.884813
SITE ELEVATION	meters above Mean Sea Level	455
GRID ELEVATION	meters above Mean Sea Level	500.48
MEAN AMBIENT TEMPERATURE	°C	27.24
MAXIMUM AMBIENT TEMPERATURE	°C	43.63
MINIMUM AMBIENT TEMPERATURE	°C	14.12
MEAN PRECIPITATION	mm/hr	1.98
MAXIMUM PRECIPITATION	mm/hr	92.29
MINIMUM PRECIPITATION	mm/hr	0
MEAN AIR DENSITY	kg/m ³	1.099
MAXIMUM AIR DENSITY	kg/m ³	1.15
MINIMUM AIR DENSITY	kg/m ³	1.05
MEAN WIND SPEED @ 10M	m/s	4.5
MAXIMUM WIND SPEED @ 10M	m/s	14.69
MINIMUM WIND SPEED @ 10M	m/s	0.01
MEAN WIND SPEED @ 50M	m/s	6.23
MAXIMUM WIND SPEED @ 50M	m/s	17.78
MINIMUM WIND SPEED @ 50M	m/s	0.03
MEAN RELATIVE HUMIDITY	%	62.52
MAXIMUM RELATIVE HUMIDITY	%	100
MINIMUM RELATIVE HUMIDITY	%	9.04
MEAN AMBIENT PRESSURE	kPa	95.28
MAXIMUM AMBIENT PRESSURE	kPa	96.31
MINIMUM AMBIENT PRESSURE	kPa	94.38
MEAN DIRECT NORMAL IRRADIANCE (DNI)	W/m ²	132.06
MAXIMUM DIRECT NORMAL IRRADIANCE (DNI)	W/m ²	1062.14
MINIMUM DIRECT NORMAL IRRADIANCE (DNI)	W/m ²	0



Details	Unit	Data
MEAN DIRECT HORIZONTAL IRRADIANCE (DHI)	W/m ²	100.84
MAXIMUM HORIZONTAL IRRADIANCE (DHI)	W/m ²	527.34
MINIMUM HORIZONTAL IRRADIANCE (DHI)	W/m ²	0
DATA ANALYSIS RESULTS		
TIME ZONE		India Standard Time
AVERAGE ALPHA		0.218
SITE TERRAIN		Rough/Urban
AVERAGE COEFFICIENT OF PERFORMANCE		0.307
TURBULANCE INTENSITY @ 15m/s WIND SPEED		0.039
REFEREMCE EXTREME WIND SPEED @ HUB HEIGHT	m/s	41.88
50 YEARS STEADY EXTREME WIND SPEED @ HUB HEIGHT	m/s	16.75
1 YEAR STEADY EXTREME WIND SPEED @ HUB HEIGHT	m/s	13.4
50 YEARS LARGEST GUST MAGNITUDE WIND SPEED @ HUB HEIGHT	m/s	58.64
IEC WIND CLASS		II
IEC WIND SITE CLASSIFICATION		Medium Wind Site
IEC TURBULANCE CLASS		C
IEC TURBULANCE CLASSIFICATION		Low turbulence
MAXIMUM WIND SPEED @ HUB HEIGHT	m/s	21.29
AVERAGE WIND SPEED @ HUB HEIGHT	m/s	8.38
MINIMUM WIND SPEED @ HUB HEIGHT	m/s	0.03
PLANT CAPACITIES AND OUTPUT GENERATION		
WIND TURBINE PLANT CAPACITY	KW	813000
BESS PLANT CAPACITY	KWH	0
ANNUAL GREEN RE POWER GENERATION		
ANNUAL GROSS GREEN RE POWER GENERATION	KWH / MKWH	4495908087 / 4495.91
ANNUAL NET GREEN RE POWER GENERATION	KWH / MKWH	4473428547 / 4473.43
ANNUAL GROSS GREEN RE POWER EXPORT	KWH / MKWH	4473428549 / 4473.43
GRID TRANSMISSION LOSSES	KWH / MKWH	87714285 / 87.71
ANNUAL NET GREEN RE POWER EXPORT	KWH / MKWH	4385714264 / 4385.71
CAPACIATY UTILIZATION FACTORS (CUF)		
Wind Energy Generator Capacity Utilization Factor	%	62.96
Wind Energy Capacity Utilization Factor without BESS	%	62.64
BESS Capacity Utilization Factor	%	0.00



Details	Unit	Data
Wind Energy Net Capacity Utilization Factor with BESS	%	61.41
ANNUAL AUXILIARY POWER CONSUMPTION & OTHER LOSSES		
Annual Auxiliary Power Consumption - Wind	KWH / MKWH / %	22479540 / 22.48 / 20.4
Annual BESS Auxiliary Power & Other Losses	KWH / MKWH / %	0 / 0.00 / 0
Annual RE Transmission Losses	KWH / MKWH / %	0 / 0.00 / 0
Annual Grid Transmission Losses	KWH / MKWH / %	87714285 / 87.71 / 79.6
Total Plant Auxiliary Power & Other Losses	KWH / MKWH / %	110193825 / 110.19 / 100
CARBON FOOTPRINT - GHG EMISSION REDUCTION		
Annual Total Emission Reduction from the Project	tons of CO ₂ e/year	3978146.96
Annual additional revenue from Carbon Credit	INR	3752968827.35
PROJECT INVESTMENT		
TOTAL PROJECT COST	Million INR	94910.58
TOTAL PROJECT COST IN USD	Million USD	1006.05
PROJECT COST PER KW	INR/KW	116741
LEVELAISED COST OF GENERATION		
GREEN RE POWER	INR/KWH	2.39
GREEN RE POWER IN USD	USD/KWH	0.03
SALE PRICE WITHOUT ESCALATION		
GREEN RE POWER	INR/KWH	2.39
PROJECT ECONOMICS		
AVERAGE DSCR		1.52
MINIMUM DSCR		1.10
PROJECT IRR	%	14.13
PROJECT NPV	Million INR	43239.63
PROJECT PAY BACK PERIOD	YEARS	7.08
EQUITY IRR	%	31.44
EQUITY NPV	Million INR	63815.20
EQUITY PAY BACK PERIOD	YEARS	3.18



Clean Green Energy Mission - Report
GREEN WIND POWER GENERATION

GP ESTIMATED GENERATION AND POWER BALANCE

PARTICULARS/YEARS		YEAR1	YEAR2	YEAR3	YEAR4	YEAR5	YEAR6	YEAR7	YEAR8	YEAR9	YEAR10	YEAR11	YEAR12	YEAR13	YEAR14	YEAR15	YEAR16	YEAR17	YEAR18	YEAR19	YEAR20
WIND TURBINE POWER GENERATION																					
CAPACITY	MW	813.00	807.31	801.66	796.05	790.48	784.95	779.46	774.00	768.58	763.20	757.86	752.55	747.28	742.05	736.86	731.70	726.58	721.49	716.44	711.42
OPERATING HOURS	HR	5530	5530	5530	5530	5530	5530	5530	5530	5530	5530	5530	5530	5530	5530	5530	5530	5530	5530	5530	5530
GROSS GENERATION	Million KWHR	4495.91	4464.44	4433.19	4402.16	4371.34	4340.74	4310.35	4280.18	4250.22	4220.47	4190.93	4161.59	4132.46	4103.53	4074.81	4046.29	4017.97	3989.84	3961.91	3934.18
AUXILIARY CONSUMPTION	Million KWHR	22.48	22.32	22.17	22.01	21.86	21.70	21.55	21.40	21.25	21.10	20.95	20.81	20.66	20.52	20.37	20.23	20.09	19.95	19.81	19.67
RE TRANSMISSION LOSS	Million KWHR	0.00	0.00	0.00	0.00	0.00	0.00	0.00	0.00	0.00	0.00	0.00	0.00	0.00	0.00	0.00	0.00	0.00	0.00	0.00	0.00
NET GENERATION	Million KWHR	4473.43	4442.12	4411.02	4380.15	4349.48	4319.04	4288.80	4258.78	4228.97	4199.37	4169.98	4140.78	4111.80	4083.01	4054.44	4026.06	3997.88	3969.89	3942.10	3914.51
TOTAL NET GREEN RE POWER GENERATION																					
TOTAL NET GREEN RE POWER GENERATION	Million KWHR	4473.43	4442.12	4411.02	4380.15	4349.48	4319.04	4288.80	4258.78	4228.97	4199.37	4169.98	4140.78	4111.80	4083.01	4054.44	4026.06	3997.88	3969.89	3942.10	3914.51
BATTERY ENERGY STORAGE SYSTEM (BESS) PLANT																					
CAPACITY	MWH	0.00	0.00	0.00	0.00	0.00	0.00	0.00	0.00	0.00	0.00	0.00	0.00	0.00	0.00	0.00	0.00	0.00	0.00	0.00	0.00
OPERATING LOAD	MW	0.00	0.00	0.00	0.00	0.00	0.00	0.00	0.00	0.00	0.00	0.00	0.00	0.00	0.00	0.00	0.00	0.00	0.00	0.00	0.00
OPERATING HOURS	HR	0	0	0	0	0	0	0	0	0	0	0	0	0	0	0	0	0	0	0	0
BESS OUTPUT	Million KWHR	0.00	0.00	0.00	0.00	0.00	0.00	0.00	0.00	0.00	0.00	0.00	0.00	0.00	0.00	0.00	0.00	0.00	0.00	0.00	0.00
AUXILIARY POWER & OTHER LOSSES	Million KWHR	0.00	0.00	0.00	0.00	0.00	0.00	0.00	0.00	0.00	0.00	0.00	0.00	0.00	0.00	0.00	0.00	0.00	0.00	0.00	0.00
AUXILIARY POWER & OTHER LOSSES																					
WIND AUX POWER	Million KWHR	22.48	22.32	22.17	22.01	21.86	21.70	21.55	21.40	21.25	21.10	20.95	20.81	20.66	20.52	20.37	20.23	20.09	19.95	19.81	19.67
BESS AUXILIARY POWER & OTHER LOSSES	Million KWHR	0.00	0.00	0.00	0.00	0.00	0.00	0.00	0.00	0.00	0.00	0.00	0.00	0.00	0.00	0.00	0.00	0.00	0.00	0.00	0.00
RE TRANSMISSION LOSSES	Million KWHR	0.00	0.00	0.00	0.00	0.00	0.00	0.00	0.00	0.00	0.00	0.00	0.00	0.00	0.00	0.00	0.00	0.00	0.00	0.00	0.00
GRID TRANSMISSION LOSSES	Million KWHR	87.71	87.10	86.49	85.89	85.28	84.69	84.09	83.51	82.92	82.34	81.76	81.19	80.62	80.06	79.50	78.94	78.39	77.84	77.30	76.76
TOTAL AUXILIARY POWER & OTHER LOSSES	Million KWHR	110.19	109.42	108.66	107.90	107.14	106.39	105.64	104.91	104.17	103.44	102.71	102.00	101.28	100.58	99.87	99.17	98.48	97.79	97.11	96.43
POWER BALANCE																					
TOTAL GROSS GREEN RE POWER GENERATION	Million KWHR	4495.91	4464.44	4433.19	4402.16	4371.34	4340.74	4310.35	4280.18	4250.22	4220.47	4190.93	4161.59	4132.46	4103.53	4074.81	4046.29	4017.97	3989.84	3961.91	3934.18
TOTAL AUXILIARY POWER & OTHER LOSSES	Million KWHR	110.19	109.42	108.66	107.90	107.14	106.39	105.64	104.91	104.17	103.44	102.71	102.00	101.28	100.58	99.87	99.17	98.48	97.79	97.11	96.43
TOTAL NET GREEN RE POWER FOR EXPORT	Million KWHR	4385.72	4355.02	4324.53	4294.26	4264.20	4234.35	4204.71	4175.27	4146.05	4117.03	4088.22	4059.59	4031.18	4002.95	3974.94	3947.12	3919.49	3892.05	3864.80	3837.75



Clean Green Energy Mission - Report
GREEN WIND POWER GENERATION

FA **FIXED ASSETS, WORKING CAPITAL AND DEBT**

PARTICULARS/YEARS		YEAR1	YEAR2	YEAR3	YEAR4	YEAR5	YEAR6	YEAR7	YEAR8	YEAR9	YEAR10	YEAR11	YEAR12	YEAR13	YEAR14	YEAR15	YEAR16	YEAR17	YEAR18	YEAR19	YEAR20
NET FIXED ASSETS																					
GROSS FIXED ASSETS OPENING	Million INR	94910.58	94910.58	94910.58	94910.58	94910.58	94910.58	94910.58	94910.58	94910.58	94910.58	94910.58	94910.58	94910.58	94910.58	94910.58	94910.58	94910.58	94910.58	94910.58	94910.58
NOT USED	Million INR	0.00	0.00	0.00	0.00	0.00	0.00	0.00	0.00	0.00	0.00	0.00	0.00	0.00	0.00	0.00	0.00	0.00	0.00	0.00	0.00
ADD:BATTERY REPLACEMENT	Million INR	0.00	0.00	0.00	0.00	0.00	0.00	0.00	0.00	0.00	0.00	0.00	0.00	0.00	0.00	0.00	0.00	0.00	0.00	0.00	0.00
GROSS FIXED ASSETS CLOSSING	Million INR	94910.58	94910.58	94910.58	94910.58	94910.58	94910.58	94910.58	94910.58	94910.58	94910.58	94910.58	94910.58	94910.58	94910.58	94910.58	94910.58	94910.58	94910.58	94910.58	94910.58
DEPRECIATION:INITIAL	Million INR	4270.98	4270.98	4270.98	4270.98	4270.98	4270.98	4270.98	4270.98	4270.98	4270.98	4270.98	4270.98	4270.98	4270.98	4270.98	4270.98	4270.98	4270.98	4270.98	4270.98
NOT USED	Million INR	0.00	0.00	0.00	0.00	0.00	0.00	0.00	0.00	0.00	0.00	0.00	0.00	0.00	0.00	0.00	0.00	0.00	0.00	0.00	0.00
DEPRECIATION:BATTERY	Million INR	0.00	0.00	0.00	0.00	0.00	0.00	0.00	0.00	0.00	0.00	0.00	0.00	0.00	0.00	0.00	0.00	0.00	0.00	0.00	0.00
TOTAL DEPRECIATION	Million INR	4270.98	4270.98	4270.98	4270.98	4270.98	4270.98	4270.98	4270.98	4270.98	4270.98	4270.98	4270.98	4270.98	4270.98	4270.98	4270.98	4270.98	4270.98	4270.98	4270.98
CUMULATIVE DEPRECIATION	Million INR	4270.98	8541.96	12812.94	17083.92	21354.90	25625.88	29896.86	34167.84	38438.82	42709.80	46980.78	51251.76	55522.74	59793.72	64064.70	68335.68	72606.66	76877.64	81148.62	85419.60
NET FIXED ASSETS	Million INR	90639.60	86368.62	82097.64	77826.66	73555.68	69284.70	65013.72	60742.74	56471.76	52200.78	47929.80	43658.82	39387.84	35116.86	30845.88	26574.90	22303.92	18032.94	13761.96	9490.98
WORKING CAPITAL																					
TOTAL REVENUE	Million INR	14234.86	14508.31	14823.81	15051.69	15321.81	15548.60	15817.18	16001.46	16269.14	16453.83	16680.04	16865.66	17132.77	17359.45	17626.31	17893.05	18198.92	18465.38	18809.28	19113.99
RECEIVABLES	Million INR	1186.24	1209.03	1235.32	1254.31	1276.82	1295.72	1318.10	1333.46	1355.76	1371.15	1390.00	1405.47	1427.73	1446.62	1468.86	1491.09	1516.58	1538.78	1567.44	1592.83
SPARES	Million INR	949.11	949.11	949.11	949.11	949.11	949.11	949.11	949.11	949.11	949.11	949.11	949.11	949.11	949.11	949.11	949.11	949.11	949.11	949.11	949.11
O&M TIED UP	Million INR	81.30	85.20	89.30	93.60	98.12	102.87	107.85	113.09	118.59	124.37	130.45	136.83	143.54	150.59	158.00	165.79	173.98	182.59	191.64	201.17
WORKING CAPITAL REQUIREMENT	Million INR	2216.65	2243.34	2273.73	2297.02	2324.05	2347.70	2375.06	2395.66	2423.46	2444.63	2469.56	2491.41	2520.38	2546.32	2575.97	2605.99	2639.67	2670.48	2708.19	2743.11
WORKING CAPITAL LOAN LESS MARGIN	Million INR	1662.49	1682.51	1705.30	1722.77	1743.04	1760.78	1781.30	1796.75	1817.60	1833.47	1852.17	1868.56	1890.29	1909.74	1931.98	1954.49	1979.75	2002.86	2031.14	2057.33
Δ WORING CAPITAL REQUIREMENT	Million INR	2216.65	26.69	30.39	23.29	27.03	23.65	27.36	20.60	27.80	21.17	24.93	21.85	28.97	25.94	29.65	30.02	33.68	30.81	37.71	34.92
Δ WORING CAPITAL LOAN	Million INR	1662.49	20.02	22.79	17.47	20.27	17.74	20.52	15.45	20.85	15.87	18.70	16.39	21.73	19.45	22.24	22.51	25.26	23.11	28.28	26.19
DEBT																					
TERM LOAN OPENING	Million INR	73081.15	73081.15	73081.15	65773.03	58464.91	51156.79	43848.67	36540.55	29232.43	21924.31	14616.19	7308.07	-0.05	-0.05	-0.05	-0.05	-0.05	-0.05	-0.05	-0.05
TERM LOAN REPAYMENT	Million INR	0.00	0.00	7308.12	7308.12	7308.12	7308.12	7308.12	7308.12	7308.12	7308.12	7308.12	7308.12	0.00	0.00	0.00	0.00	0.00	0.00	0.00	0.00
TERM LOAN CLOSING	Million INR	73081.15	73081.15	65773.03	58464.91	51156.79	43848.67	36540.55	29232.43	21924.31	14616.19	7308.07	-0.05	-0.05	-0.05	-0.05	-0.05	-0.05	-0.05	-0.05	-0.05
INTEREST ON TERM LOAN	Million INR	5115.68	5115.68	5115.68	4604.11	4092.54	3580.98	3069.41	2557.84	2046.27	1534.70	1023.14	511.57	0.00	0.00	0.00	0.00	0.00	0.00	0.00	0.00
WORKING CAPITAL LOAN	Million INR	1662.49	1682.51	1705.30	1722.77	1743.04	1760.78	1781.30	1796.75	1817.60	1833.47	1852.17	1868.56	1890.29	1909.74	1931.98	1954.49	1979.75	2002.86	2031.14	2057.33
INTEREST ON WORKING CAPITAL LOAN	Million INR	116.37	117.78	119.37	120.59	122.01	123.25	124.69	125.77	127.23	128.34	129.65	130.80	132.32	133.68	135.24	136.81	138.58	140.20	142.18	144.01



Clean Green Energy Mission - Report
GREEN WIND POWER GENERATION

LC ESTIMATION OF LEVELISED COST OF GENERATION

PARTICULARS/YEARS		YEAR1	YEAR2	YEAR3	YEAR4	YEAR5	YEAR6	YEAR7	YEAR8	YEAR9	YEAR10	YEAR11	YEAR12	YEAR13	YEAR14	YEAR15	YEAR16	YEAR17	YEAR18	YEAR19	YEAR20
INTEREST ON TERM LOAN																					
INTEREST ON TERM LOAN	Million INR	5115.68	5115.68	5115.68	4604.11	4092.54	3580.98	3069.41	2557.84	2046.27	1534.70	1023.14	511.57	0.00	0.00	0.00	0.00	0.00	0.00	0.00	0.00
BOOK DEPRECIATION																					
OPENING VALUE	Million INR	94910.58	90639.60	86368.62	82097.64	77826.66	73555.68	69284.70	65013.72	60742.74	56471.76	52200.78	47929.80	43658.82	39387.84	35116.86	30845.88	26574.90	22303.92	18032.94	13761.96
BOOK DEPRECIATION	Million INR	4270.98	4270.98	4270.98	4270.98	4270.98	4270.98	4270.98	4270.98	4270.98	4270.98	4270.98	4270.98	4270.98	4270.98	4270.98	4270.98	4270.98	4270.98	4270.98	4270.98
CLOSING VALUE	Million INR	90639.60	86368.62	82097.64	77826.66	73555.68	69284.70	65013.72	60742.74	56471.76	52200.78	47929.80	43658.82	39387.84	35116.86	30845.88	26574.90	22303.92	18032.94	13761.96	9490.98
CUMULATIVE DEPRECIATION	Million INR	4270.98	8541.96	12812.94	17083.92	21354.90	25625.88	29896.86	34167.84	38438.82	42709.80	46980.78	51251.76	55522.74	59793.72	64064.70	68335.68	72606.66	76877.64	81148.62	85419.60
O & M EXPENSES																					
WIND TURBINE POWER PLANT O & M	Million INR	975.60	1022.43	1071.60	1123.23	1177.46	1234.41	1294.23	1357.07	1423.09	1492.45	1565.34	1641.93	1722.42	1807.02	1895.95	1989.43	2087.72	2191.05	2299.71	2413.98
BESS PLANT O & M	Million INR	0.00	0.00	0.00	0.00	0.00	0.00	0.00	0.00	0.00	0.00	0.00	0.00	0.00	0.00	0.00	0.00	0.00	0.00	0.00	0.00
TOTAL O & M EXPENSES	Million INR	975.60	1022.43	1071.60	1123.23	1177.46	1234.41	1294.23	1357.07	1423.09	1492.45	1565.34	1641.93	1722.42	1807.02	1895.95	1989.43	2087.72	2191.05	2299.71	2413.98
RETURN ON EQUITY																					
RETURN ON EQUITY	Million INR	0.00	0.00	0.00	0.00	0.00	0.00	0.00	0.00	0.00	0.00	0.00	0.00	0.00	0.00	0.00	0.00	0.00	0.00	0.00	0.00
INTEREST ON WORKING CAPITAL																					
WORKING CAPITAL	Million INR	2216.65	2243.34	2273.73	2297.02	2324.05	2347.70	2375.06	2395.66	2423.46	2444.63	2469.56	2491.41	2520.38	2546.32	2575.97	2605.99	2639.67	2670.48	2708.19	2743.11
INTEREST ON WORKING CAPITAL	Million INR	116.37	117.78	119.37	120.59	122.01	123.25	124.69	125.77	127.23	128.34	129.65	130.80	132.32	133.68	135.24	136.81	138.58	140.20	142.18	144.01
INCOME TAX																					
INCOME TAX	Million INR	0.00	0.00	0.00	299.38	814.60	1101.23	1382.68	1632.67	1889.13	2116.69	2343.57	2552.65	2771.44	2861.38	2953.25	3038.79	3127.06	3201.28	3287.42	3360.26
TOTAL COST OF GENERATION																					
TOTAL COST OF GENERATION	Million INR	10478.63	10526.87	10577.63	10418.29	10477.59	10310.85	10141.99	9944.33	9756.70	9543.16	9332.68	9107.93	8897.16	9073.06	9255.42	9436.01	9624.34	9803.51	10000.29	10189.23
LEVELIZED COST OF GENERATION (LCOG)																					
DISCOUNTING FACTOR		1.00	0.93	0.86	0.79	0.74	0.68	0.63	0.58	0.54	0.50	0.46	0.43	0.40	0.37	0.34	0.32	0.29	0.27	0.25	0.23
LCOG - GREEN RE POWER																					
COST OF GENERATION	INR/KWH	2.39	2.42	2.45	2.43	2.46	2.44	2.41	2.38	2.35	2.32	2.28	2.24	2.21	2.27	2.33	2.39	2.46	2.52	2.59	2.66
DISCOUNTED COST OF GENERATION	INR/KWH	2.39	2.25	2.11	1.92	1.82	1.66	1.52	1.38	1.27	1.16	1.05	0.96	0.88	0.84	0.79	0.76	0.71	0.68	0.65	0.61
LEVELIZED COST OF GENERATION (LCOG)	INR/KWH	2.39																			



Clean Green Energy Mission - Report
GREEN WIND POWER GENERATION

RV ESTIMATION OF REVENUE GENERATION

PARTICULARS/YEARS		YEAR1	YEAR2	YEAR3	YEAR4	YEAR5	YEAR6	YEAR7	YEAR8	YEAR9	YEAR10	YEAR11	YEAR12	YEAR13	YEAR14	YEAR15	YEAR16	YEAR17	YEAR18	YEAR19	YEAR20
PROJECTED REVENUE																					
REVENUE FROM SALE OF RE GREEN POWER																					
RE GREEN POWER GENERATION	Million KWHR	4385.720	4355.020	4324.530	4294.260	4264.200	4234.350	4204.710	4175.270	4146.050	4117.030	4088.220	4059.590	4031.180	4002.950	3974.940	3947.120	3919.490	3892.050	3864.800	3837.750
RE GREEN POWER SALE PRICE	INR/KWH	2.39	2.44	2.49	2.54	2.59	2.64	2.69	2.75	2.80	2.86	2.91	2.97	3.03	3.09	3.15	3.22	3.28	3.35	3.41	3.48
REVENUE FROM SALE OF RE GREEN POWER	Million INR	10481.87	10669.80	10897.82	11036.25	11214.85	11348.06	11520.91	11607.25	11774.78	11857.05	11978.48	12056.98	12214.48	12329.09	12481.31	12630.78	12816.73	12960.53	13178.97	13355.37
REVENUE FROM SALE OF CARBON CREDIT																					
ANNUAL TOTAL EMISSION REDUCTION FROM THE PROJECT	tCO ₂ e/year	3978149	3950303	3922652	3895195	3867924	3840848	3813958	3787263	3760753	3734429	3708291	3682330	3656555	3630956	3605544	3580308	3555250	3530359	3505646	3481109
CARBON CREDIT SALE PRICE	INR/tCO ₂ e	943.40	971.70	1000.85	1030.87	1061.80	1093.65	1126.46	1160.26	1195.07	1230.92	1267.85	1305.88	1345.06	1385.41	1426.97	1469.78	1513.87	1559.29	1606.07	1654.25
REVENUE FROM SALE OF CARBON CREDIT	Million INR	3752.99	3838.51	3925.99	4015.44	4106.96	4200.54	4296.27	4394.21	4494.36	4596.78	4701.56	4808.68	4918.29	5030.36	5145.00	5262.27	5382.19	5504.85	5630.31	5758.62
RE GENERATION BASED INCENTIVE (GBI)																					
RE GBI RATE	INR/KWH	0.00	0.00	0.00	0.00	0.00	0.00	0.00	0.00	0.00	0.00	0.00	0.00	0.00	0.00	0.00	0.00	0.00	0.00	0.00	0.00
REVENUE FROM RE GENERATION BASED INCENTIVE (GBI)	Million INR	0.00	0.00	0.00	0.00	0.00	0.00	0.00	0.00	0.00	0.00	0.00	0.00	0.00	0.00	0.00	0.00	0.00	0.00	0.00	0.00
REVENUE LOSS DUE TO CURTAILMENT / LOSSES FROM SALE OF RE GREEN POWER																					
CURTAILMENT / LOSSES	%	0.00	0.00	0.00	0.00	0.00	0.00	0.00	0.00	0.00	0.00	0.00	0.00	0.00	0.00	0.00	0.00	0.00	0.00	0.00	0.00
REVENUE LOSS DUE TO CURTAILMENT / LOSSES	Million INR	0.00	0.00	0.00	0.00	0.00	0.00	0.00	0.00	0.00	0.00	0.00	0.00	0.00	0.00	0.00	0.00	0.00	0.00	0.00	0.00
TOTAL REVENUE GENERATION																					
TOTAL REVENUE GENERATION	Million INR	14234.86	14508.31	14823.81	15051.69	15321.81	15548.60	15817.18	16001.46	16269.14	16453.83	16680.04	16865.66	17132.77	17359.45	17626.31	17893.05	18198.92	18465.38	18809.28	19113.99



Clean Green Energy Mission - Report
GREEN WIND POWER GENERATION

PS PROJECTED PROFITABILITY STATEMENT

PARTICULARS/YEARS		YEAR1	YEAR2	YEAR3	YEAR4	YEAR5	YEAR6	YEAR7	YEAR8	YEAR9	YEAR10	YEAR11	YEAR12	YEAR13	YEAR14	YEAR15	YEAR16	YEAR17	YEAR18	YEAR19	YEAR20
EARNINGS BEFORE INTEREST TAX DEPRECIATION AMORTIZATION (EBITDA)																					
TOTAL REVENUE	Million INR	14234.86	14508.31	14823.81	15051.69	15321.81	15548.60	15817.18	16001.46	16269.14	16453.83	16680.04	16865.66	17132.77	17359.45	17626.31	17893.05	18198.92	18465.38	18809.28	19113.99
NOT USED	Million INR	0.00	0.00	0.00	0.00	0.00	0.00	0.00	0.00	0.00	0.00	0.00	0.00	0.00	0.00	0.00	0.00	0.00	0.00	0.00	0.00
NOT USED	Million INR	0.00	0.00	0.00	0.00	0.00	0.00	0.00	0.00	0.00	0.00	0.00	0.00	0.00	0.00	0.00	0.00	0.00	0.00	0.00	0.00
O&M EXPENSES	Million INR	975.60	1022.43	1071.60	1123.23	1177.46	1234.41	1294.23	1357.07	1423.09	1492.45	1565.34	1641.93	1722.42	1807.02	1895.95	1989.43	2087.72	2191.05	2299.71	2413.98
NOT USED	Million INR	0.00	0.00	0.00	0.00	0.00	0.00	0.00	0.00	0.00	0.00	0.00	0.00	0.00	0.00	0.00	0.00	0.00	0.00	0.00	0.00
EBITDA	Million INR	13259.26	13485.88	13752.21	13928.46	14144.35	14314.19	14522.95	14644.39	14846.05	14961.38	15114.70	15223.73	15410.35	15552.43	15730.36	15903.62	16111.20	16274.33	16509.57	16700.01
EARNINGS BEFORE INTEREST TAXES (EBIT)																					
BOOK DEPRECIATION	Million INR	4270.98	4270.98	4270.98	4270.98	4270.98	4270.98	4270.98	4270.98	4270.98	4270.98	4270.98	4270.98	4270.98	4270.98	4270.98	4270.98	4270.98	4270.98	4270.98	4270.98
EBIT	Million INR	8988.28	9214.90	9481.23	9657.48	9873.37	10043.21	10251.97	10373.41	10575.07	10690.40	10843.72	10952.75	11139.37	11281.45	11459.38	11632.64	11840.22	12003.35	12238.59	12429.03
PROFIT BEFORE TAX (PBT)																					
INTEREST ON TERM LOAN	Million INR	5115.68	5115.68	5115.68	4604.11	4092.54	3580.98	3069.41	2557.84	2046.27	1534.70	1023.14	511.57	0.00	0.00	0.00	0.00	0.00	0.00	0.00	0.00
INTEREST ON WORKING CAPITAL	Million INR	116.37	117.78	119.37	120.59	122.01	123.25	124.69	125.77	127.23	128.34	129.65	130.80	132.32	133.68	135.24	136.81	138.58	140.20	142.18	144.01
PBT	Million INR	3756.23	3981.44	4246.18	4932.78	5658.82	6338.98	7057.87	7689.80	8401.57	9027.36	9690.93	10310.38	11007.05	11147.77	11324.14	11495.83	11701.64	11863.15	12096.41	12285.02
PROFIT AFTER TAX (PAT)																					
OPENING VALUE	Million INR	94910.58	85419.52	76877.57	69189.81	62270.83	56043.75	50439.37	45395.43	40855.89	36770.30	33093.27	29783.94	26805.55	24124.99	21712.49	19541.24	17587.12	15828.41	14245.57	12821.01
TAX DEPRECIATION	Million INR	9491.06	8541.95	7687.76	6918.98	6227.08	5604.38	5043.94	4539.54	4085.59	3677.03	3309.33	2978.39	2680.56	2412.50	2171.25	1954.12	1758.71	1582.84	1424.56	1282.10
CLOSING VALUE	Million INR	85419.52	76877.57	69189.81	62270.83	56043.75	50439.37	45395.43	40855.89	36770.30	33093.27	29783.94	26805.55	24124.99	21712.49	19541.24	17587.12	15828.41	14245.57	12821.01	11538.91
CUMULATIVE DEPRECIATION	Million INR	85419.52	93961.47	101649.23	108568.21	114795.29	120399.67	125443.61	129983.15	134068.74	137745.77	141055.10	144033.49	146714.05	149126.55	151297.80	153251.92	155010.63	156593.47	158018.03	159300.13
TAXABLE INCOME (AFTER LOSS (CF))	Million INR	0.00	0.00	0.00	1360.80	3702.72	5005.58	6284.91	7421.24	8586.96	9621.31	10652.58	11602.97	12597.47	13006.25	13423.87	13812.69	14213.91	14551.29	14942.83	15273.90
LOSS CARRIED FORWARD (CF)	Million INR	1463.85	1753.38	923.98	0.00	0.00	0.00	0.00	0.00	0.00	0.00	0.00	0.00	0.00	0.00	0.00	0.00	0.00	0.00	0.00	0.00
TAX	Million INR	0.00	0.00	0.00	299.38	814.60	1101.23	1382.68	1632.67	1889.13	2116.69	2343.57	2552.65	2771.44	2861.38	2953.25	3038.79	3127.06	3201.28	3287.42	3360.26
PAT	Million INR	3756.23	3981.44	4246.18	4633.40	4844.22	5237.75	5675.19	6057.13	6512.44	6910.67	7347.36	7757.73	8235.61	8286.39	8370.89	8457.04	8574.58	8661.87	8808.99	8924.76
NET CASH ACCRUAL																					
NET CASH ACCRUAL	Million INR	8027.21	8252.42	8517.16	8904.38	9115.20	9508.73	9946.17	10328.11	10783.42	11181.65	11618.34	12028.71	12506.59	12557.37	12641.87	12728.02	12845.56	12932.85	13079.97	13195.74
CUMULATIVE CASH ACCRUAL	Million INR	8027.21	16279.63	24796.79	33701.17	42816.37	52325.10	62271.27	72599.38	83382.80	94564.45	106182.79	118211.50	130718.09	143275.46	155917.33	168645.35	181490.91	194423.76	207503.73	220699.47



Clean Green Energy Mission - Report
GREEN WIND POWER GENERATION

CF PROJECTED CASH FLOW STATEMENT

PARTICULARS/YEARS		YEAR1	YEAR2	YEAR3	YEAR4	YEAR5	YEAR6	YEAR7	YEAR8	YEAR9	YEAR10	YEAR11	YEAR12	YEAR13	YEAR14	YEAR15	YEAR16	YEAR17	YEAR18	YEAR19	YEAR20
OPERATING CASH FLOW																					
PAT	Million INR	3756.23	3981.44	4246.18	4633.40	4844.22	5237.75	5675.19	6057.13	6512.44	6910.67	7347.36	7757.73	8235.61	8286.39	8370.89	8457.04	8574.58	8661.87	8808.99	8924.76
ADD:BOOK DEPRECIATION	Million INR	4270.98	4270.98	4270.98	4270.98	4270.98	4270.98	4270.98	4270.98	4270.98	4270.98	4270.98	4270.98	4270.98	4270.98	4270.98	4270.98	4270.98	4270.98	4270.98	4270.98
LESS:WORING CAPITAL REQUIREMENT	Million INR	-2216.65	-26.69	-30.39	-23.29	-27.03	-23.65	-27.36	-20.60	-27.80	-21.17	-24.93	-21.85	-28.97	-25.94	-29.65	-30.02	-33.68	-30.81	-37.71	-34.92
OPERATING CASH FLOW	Million INR	5810.56	8225.73	8486.77	8881.09	9088.17	9485.08	9918.81	10307.51	10755.62	11160.48	11593.41	12006.86	12477.62	12531.43	12612.22	12698.00	12811.88	12902.04	13042.26	13160.82
INVESTING CASH FLOW																					
SUBSIDY RECEIPT	Million INR	0.00	0.00	0.00	0.00	0.00	0.00	0.00	0.00	0.00	0.00	0.00	0.00	0.00	0.00	0.00	0.00	0.00	0.00	0.00	0.00
CASH RESERVE FOR FUTURE INVESTMENT	Million INR	0.00	0.00	0.00	0.00	0.00	0.00	0.00	0.00	0.00	0.00	0.00	0.00	0.00	0.00	0.00	0.00	0.00	0.00	0.00	0.00
NOT USED	Million INR	0.00	0.00	0.00	0.00	0.00	0.00	0.00	0.00	0.00	0.00	0.00	0.00	0.00	0.00	0.00	0.00	0.00	0.00	0.00	0.00
CAPEX BATTERY REPLACEMENT	Million INR	-0.00	-0.00	-0.00	-0.00	-0.00	-0.00	-0.00	-0.00	-0.00	-0.00	-0.00	-0.00	-0.00	-0.00	-0.00	-0.00	-0.00	-0.00	-0.00	-0.00
INVESTING CASH FLOW	Million INR	0.00	0.00	0.00	0.00	0.00	0.00	0.00	0.00	0.00	0.00	0.00	0.00	0.00	0.00	0.00	0.00	0.00	0.00	0.00	0.00
FINANCING CASH FLOW																					
INTEREST DURING CONSTRUCTION	Million INR	6643.74	0.00	0.00	0.00	0.00	0.00	0.00	0.00	0.00	0.00	0.00	0.00	0.00	0.00	0.00	0.00	0.00	0.00	0.00	0.00
WORING CAPITAL LOAN	Million INR	1662.49	20.02	22.79	17.47	20.27	17.74	20.52	15.45	20.85	15.87	18.70	16.39	21.73	19.45	22.24	22.51	25.26	23.11	28.28	26.19
TERM LOAN REPAYMENT	Million INR	-0.00	-0.00	-7308.12	-7308.12	-7308.12	-7308.12	-7308.12	-7308.12	-7308.12	-7308.12	-7308.12	-7308.12	-0.00	-0.00	-0.00	-0.00	-0.00	-0.00	-0.00	-0.00
FINANCING CASH FLOW	Million INR	8306.23	20.02	-7285.33	-7290.65	-7287.85	-7290.38	-7287.60	-7292.67	-7287.27	-7292.25	-7289.42	-7291.73	21.73	19.45	22.24	22.51	25.26	23.11	28.28	26.19
NET CASH MOVEMENT																					
NET CASH MOVEMENT	Million INR	14116.79	8245.75	1201.44	1590.44	1800.32	2194.70	2631.21	3014.84	3468.35	3868.23	4303.99	4715.13	12499.35	12550.88	12634.46	12720.51	12837.14	12925.15	13070.54	13187.01
CASH BALANCE																					
OPENING CASH BALANCE	Million INR	0.00	14116.79	22362.54	23563.98	25154.42	26954.74	29149.44	31780.65	34795.49	38263.84	42132.07	46436.06	51151.19	63650.54	76201.42	88835.88	101556.39	114393.53	127318.68	140389.22
CLOSING CASH BALANCE	Million INR	14116.79	22362.54	23563.98	25154.42	26954.74	29149.44	31780.65	34795.49	38263.84	42132.07	46436.06	51151.19	63650.54	76201.42	88835.88	101556.39	114393.53	127318.68	140389.22	153576.23



Clean Green Energy Mission - Report
GREEN WIND POWER GENERATION

BS PROJECTED BALANCE SHEET

PARTICULARS/YEARS		YEAR1	YEAR2	YEAR3	YEAR4	YEAR5	YEAR6	YEAR7	YEAR8	YEAR9	YEAR10	YEAR11	YEAR12	YEAR13	YEAR14	YEAR15	YEAR16	YEAR17	YEAR18	YEAR19	YEAR20
LIABILITY & EQUITY																					
SHARE CAPITAL - EQUITY	Million INR	28473.17	28473.17	28473.17	28473.17	28473.17	28473.17	28473.17	28473.17	28473.17	28473.17	28473.17	28473.17	28473.17	28473.17	28473.17	28473.17	28473.17	28473.17	28473.17	28473.17
RETAINED EARNINGS	Million INR	3756.23	7737.67	11983.85	16617.25	21461.47	26699.22	32374.41	38431.54	44943.98	51854.65	59202.01	66959.74	75195.35	83481.74	91852.63	100309.67	108884.25	117546.12	126355.11	135279.87
CASH RESERVE FOR FUTURE INVESTMENT	Million INR	0.00	0.00	0.00	0.00	0.00	0.00	0.00	0.00	0.00	0.00	0.00	0.00	0.00	0.00	0.00	0.00	0.00	0.00	0.00	0.00
CAPITAL SUBSIDY RESERVE	Million INR	0.00	0.00	0.00	0.00	0.00	0.00	0.00	0.00	0.00	0.00	0.00	0.00	0.00	0.00	0.00	0.00	0.00	0.00	0.00	0.00
TERM LOAN	Million INR	73081.15	73081.15	65773.03	58464.91	51156.79	43848.67	36540.55	29232.43	21924.31	14616.19	7308.07	-0.05	-0.05	-0.05	-0.05	-0.05	-0.05	-0.05	-0.05	-0.05
WORKING CAPITAL LOAN	Million INR	1662.49	1682.51	1705.30	1722.77	1743.04	1760.78	1781.30	1796.75	1817.60	1833.47	1852.17	1868.56	1890.29	1909.74	1931.98	1954.49	1979.75	2002.86	2031.14	2057.33
TOTAL LIABILITY & EQUITY	Million INR	106973.04	110974.50	107935.35	105278.10	102834.47	100781.84	99169.43	97933.89	97159.06	96777.48	96835.42	97301.42	105558.76	113864.60	122257.73	130737.28	139337.12	148022.10	156859.37	165810.32
ASSETS																					
NET FIXED ASSETS	Million INR	90639.60	86368.62	82097.64	77826.66	73555.68	69284.70	65013.72	60742.74	56471.76	52200.78	47929.80	43658.82	39387.84	35116.86	30845.88	26574.90	22303.92	18032.94	13761.96	9490.98
RECEIVABLES	Million INR	1186.24	1209.03	1235.32	1254.31	1276.82	1295.72	1318.10	1333.46	1355.76	1371.15	1390.00	1405.47	1427.73	1446.62	1468.86	1491.09	1516.58	1538.78	1567.44	1592.83
SPARES	Million INR	949.11	949.11	949.11	949.11	949.11	949.11	949.11	949.11	949.11	949.11	949.11	949.11	949.11	949.11	949.11	949.11	949.11	949.11	949.11	949.11
O&M TIED UP	Million INR	81.30	85.20	89.30	93.60	98.12	102.87	107.85	113.09	118.59	124.37	130.45	136.83	143.54	150.59	158.00	165.79	173.98	182.59	191.64	201.17
CASH BALANCE	Million INR	14116.79	22362.54	23563.98	25154.42	26954.74	29149.44	31780.65	34795.49	38263.84	42132.07	46436.06	51151.19	63650.54	76201.42	88835.88	101556.39	114393.53	127318.68	140389.22	153576.23
TOTAL ASSETS	Million INR	106973.04	110974.50	107935.35	105278.10	102834.47	100781.84	99169.43	97933.89	97159.06	96777.48	96835.42	97301.42	105558.76	113864.60	122257.73	130737.28	139337.12	148022.10	156859.37	165810.32
CHECK																					
CHECK	Million INR	0.00	0.00	0.00	0.00	0.00	0.00	0.00	0.00	0.00	0.00	0.00	0.00	0.00	0.00	0.00	0.00	0.00	0.00	0.00	0.00



Clean Green Energy Mission - Report
GREEN WIND POWER GENERATION

DS DEBT SERVICE COVERAGE RATIO

PARTICULARS/YEARS		YEAR1	YEAR2	YEAR3	YEAR4	YEAR5	YEAR6	YEAR7	YEAR8	YEAR9	YEAR10	YEAR11	YEAR12	YEAR13	YEAR14	YEAR15	YEAR16	YEAR17	YEAR18	YEAR19	YEAR20
DEBT SERVICE COVERAGE RATIO (DSCR)																					
PROFIT AFTER TAX (PAT)	Million INR	3756.23	3981.44	4246.18	4633.40	4844.22	5237.75	5675.19	6057.13	6512.44	6910.67	7347.36	7757.73	8235.61	8286.39	8370.89	8457.04	8574.58	8661.87	8808.99	8924.76
DEPRECIATION	Million INR	4270.98	4270.98	4270.98	4270.98	4270.98	4270.98	4270.98	4270.98	4270.98	4270.98	4270.98	4270.98	4270.98	4270.98	4270.98	4270.98	4270.98	4270.98	4270.98	4270.98
INTEREST ON LOAN	Million INR	5115.68	5115.68	5115.68	4604.11	4092.54	3580.98	3069.41	2557.84	2046.27	1534.70	1023.14	511.57	0.00	0.00	0.00	0.00	0.00	0.00	0.00	0.00
REPAYMENT OF PRINCIPAL	Million INR	0.00	0.00	7308.12	7308.12	7308.12	7308.12	7308.12	7308.12	7308.12	7308.12	7308.12	7308.12	0.00	0.00	0.00	0.00	0.00	0.00	0.00	0.00
DEBT SERVICE	Million INR	5115.68	5115.68	12423.80	11912.23	11400.66	10889.10	10377.53	9865.96	9354.39	8842.82	8331.26	7819.69	0.00	0.00	0.00	0.00	0.00	0.00	0.00	0.00
DEBT SERVICE COVERAGE RATIO (DSCR)		2.57	2.61	1.10	1.13	1.16	1.20	1.25	1.31	1.37	1.44	1.52	1.60	0.00	0.00	0.00	0.00	0.00	0.00	0.00	0.00
AVERAGE DSCR		1.52																			
MINIMUM DSCR		1.10																			



Clean Green Energy Mission - Report
GREEN WIND POWER GENERATION

IR INTERNAL RATE OF RETURN (IRR) AND NET PRESENT VALUE (NPV)

PARTICULARS/YEARS		YEAR0	YEAR1	YEAR2	YEAR3	YEAR4	YEAR5	YEAR6	YEAR7	YEAR8	YEAR9	YEAR10	YEAR11	YEAR12	YEAR13	YEAR14	YEAR15	YEAR16	YEAR17	YEAR18	YEAR19	YEAR20
OVERALL PROJECT																						
CASH OUTFLOW	Million INR	94910.58	0.00	0.00	0.00	0.00	0.00	0.00	0.00	0.00	0.00	0.00	0.00	0.00	0.00	0.00	0.00	0.00	0.00	0.00	0.00	0.00
CASH INFLOW	Million INR	0.00	13259.26	13485.88	13752.21	13928.46	14144.35	14314.19	14522.95	14644.39	14846.05	14961.38	15114.70	15223.73	15410.35	15552.43	15730.36	15903.62	16111.20	16274.33	16509.57	16700.01
SALVAGE VALUE	Million INR	0.00	0.00	0.00	0.00	0.00	0.00	0.00	0.00	0.00	0.00	0.00	0.00	0.00	0.00	0.00	0.00	0.00	0.00	0.00	0.00	9491.06
NET CASH INFLOW	Million INR	-94910.58	13259.26	13485.88	13752.21	13928.46	14144.35	14314.19	14522.95	14644.39	14846.05	14961.38	15114.70	15223.73	15410.35	15552.43	15730.36	15903.62	16111.20	16274.33	16509.57	26191.07
IRR (PROJECT)	%	14.13																				
NPV (PROJECT)	Million INR	43239.63																				
PROJECT PAY BACK PERIOD	YEARS	7.08																				
EQUITY																						
CASH OUTFLOW	Million INR	28473.17	0.00	0.00	0.00	0.00	0.00	0.00	0.00	0.00	0.00	0.00	0.00	0.00	0.00	0.00	0.00	0.00	0.00	0.00	0.00	0.00
CASH INFLOW	Million INR	0.00	8027.21	8252.42	8517.16	8904.38	9115.20	9508.73	9946.17	10328.11	10783.42	11181.65	11618.34	12028.71	12506.59	12557.37	12641.87	12728.02	12845.56	12932.85	13079.97	13195.74
SALVAGE VALUE	Million INR	0.00	0.00	0.00	0.00	0.00	0.00	0.00	0.00	0.00	0.00	0.00	0.00	0.00	0.00	0.00	0.00	0.00	0.00	0.00	0.00	9491.06
NET CASH INFLOW	Million INR	-28473.17	8027.21	8252.42	8517.16	8904.38	9115.20	9508.73	9946.17	10328.11	10783.42	11181.65	11618.34	12028.71	12506.59	12557.37	12641.87	12728.02	12845.56	12932.85	13079.97	22686.80
IRR (EQUITY)	%	31.44																				
NPV (EQUITY)	Million INR	63815.20																				
EQUITY PAY BACK PERIOD	YEARS	3.18																				